

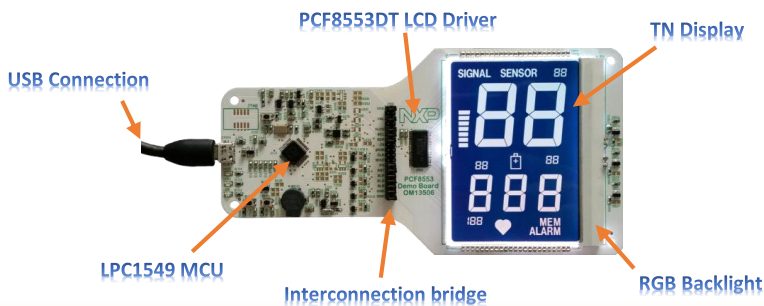
# OM13506

## Quick start Guide



## Introduction to OM13506

The PCF8553DTT device is one of NXP's LCD driver integrated circuit able to drive up to 160 segments with low-power consumption. The OM13506 demo board and its GUI (graphical user interface) allow the user to evaluate the PCF8553DTT performance.



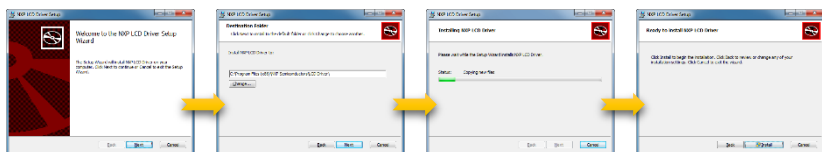
**Quick start guide for OM13506**

## Step 1: GUI installation

The GUI installer can be downloaded from the following link:

<http://www.nxp.com/demoboard/OM13506.html>

The installer requires just only 3 clicks in order to finalize the process. The following images illustrate the procedure.



**Quick start guide for OM13506**

Date of release: May 2015  
12NC: 9353 061 67598

For sales office addresses, please send an email to: [salesaddresses@nxp.com](mailto:salesaddresses@nxp.com)  
For more information, please visit: <http://www.nxp.com>

© NXP Semiconductors N.V. 2015  
All rights reserved.

Please be aware that important notices concerning this document and the product(s) described herein, have been included in section 'Legal information'.



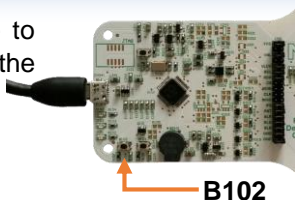
## Step 2: Standard alone mode

The standard alone mode is active once the board is plugged in. In this mode, OM13506 shows simple functionalities of the LCD driver with a simple application counting up and down.

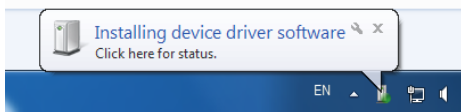


## Step 3: GUI mode

In order to enter in GUI mode and be able to interact with the OM13506 through the GUI, the B102 button must be pressed.



The first time the OM13506 is connected to the PC, the drivers must be installed. No custom drivers are needed, Windows will install the drivers automatically.



**Quick start guide for OM13506**

## Step 4: Launching GUI

Once the drivers are installed the GUI can be launched. The GUI shortcut can be found in the Windows start menu.

If the GUI shortcut is not available in the Windows start menu, it can be found in inside of the menu in the following location:

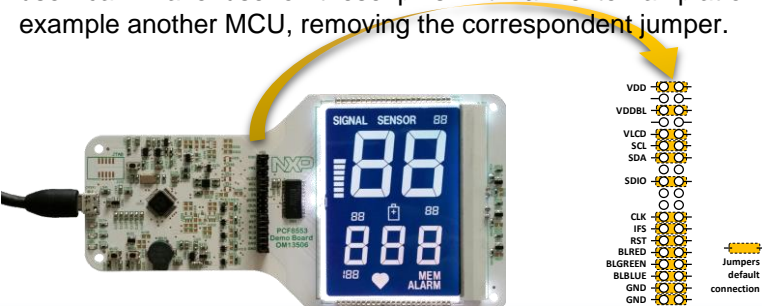
**Start Menu → NXP Semiconductors → LCD Driver → NXP LCD Driver**



**Quick start guide for OM13506**

## Interconnection bridge

OM13506 is a flexible evaluation tool. The interconnection bridge is a connector where the main pins of the LCD driver are available. The user can make use of these pins with an external platform, for example another MCU, removing the correspondent jumper.



**Quick start guide for OM13506**