
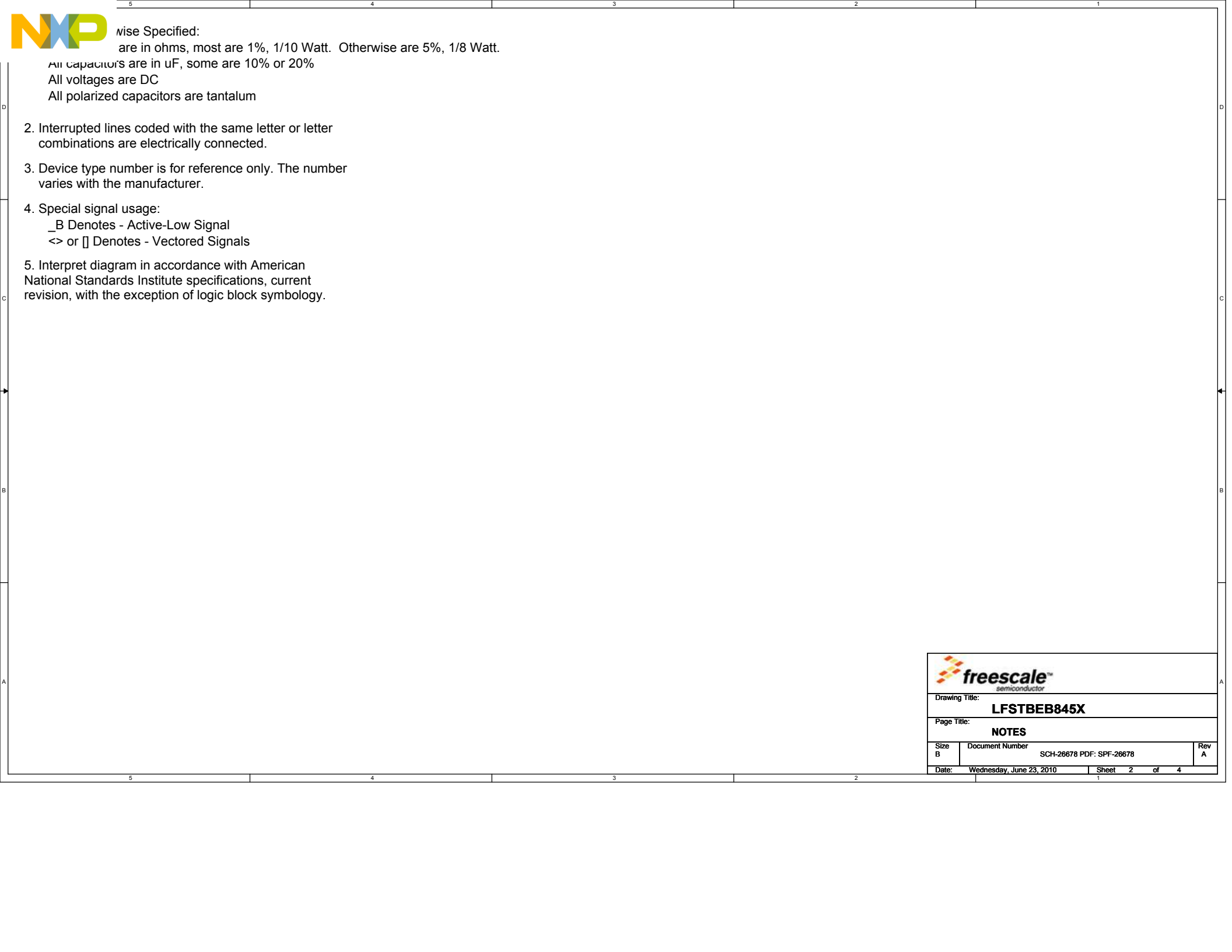


5x Schematic

4 MCU Schematic Circuit

| Revisions | | |
|-----------|------------------|---------|
| Rev | Description | Date |
| A | Original Release | 6-16-10 |

| | | | |
|---|--|--|---|
|  | | RASG - Inertial 2100 E. Elliot Rd Tempe, AZ 85284 | |
| This document contains information proprietary to Freescale Semiconductor and shall not be used for engineering design, procurement or manufacture in whole or in part without the express written permission of Freescale Semiconductor. | | | |
| Designer: K. Tuck | | Drawing Title: LFSTBEB845X | |
| Drawn by: W. Agyepong | | Page Title: Schematics Page Content | |
| Approved: K. Tuck | | Size B | Document Number SCH-26678 PDF: SPF-26678 |
| Date: Tuesday, September 14, 2010 | | Sheet 1 of 4 | Rev A |

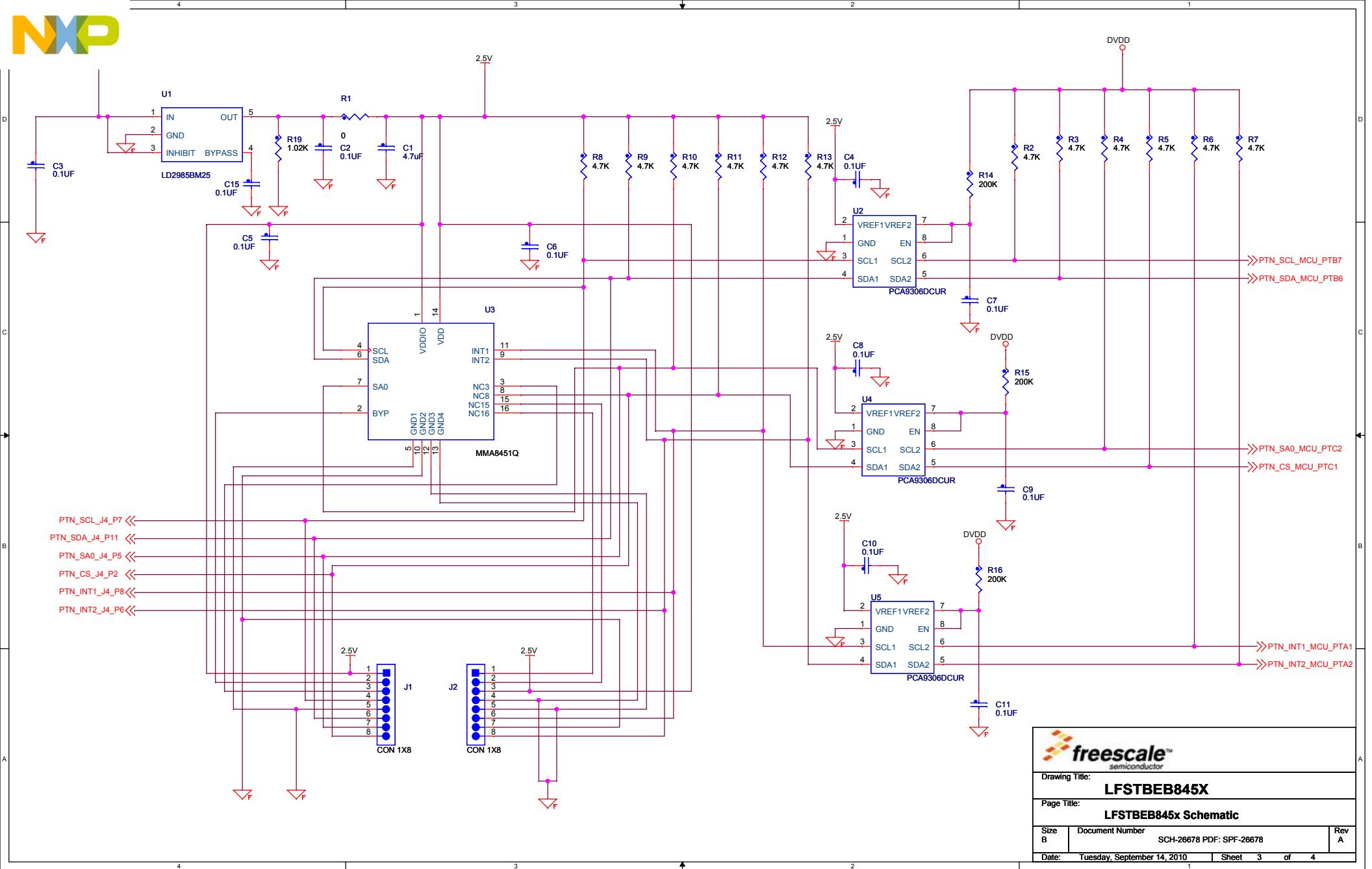


otherwise Specified:
 are in ohms, most are 1%, 1/10 Watt. Otherwise are 5%, 1/8 Watt.

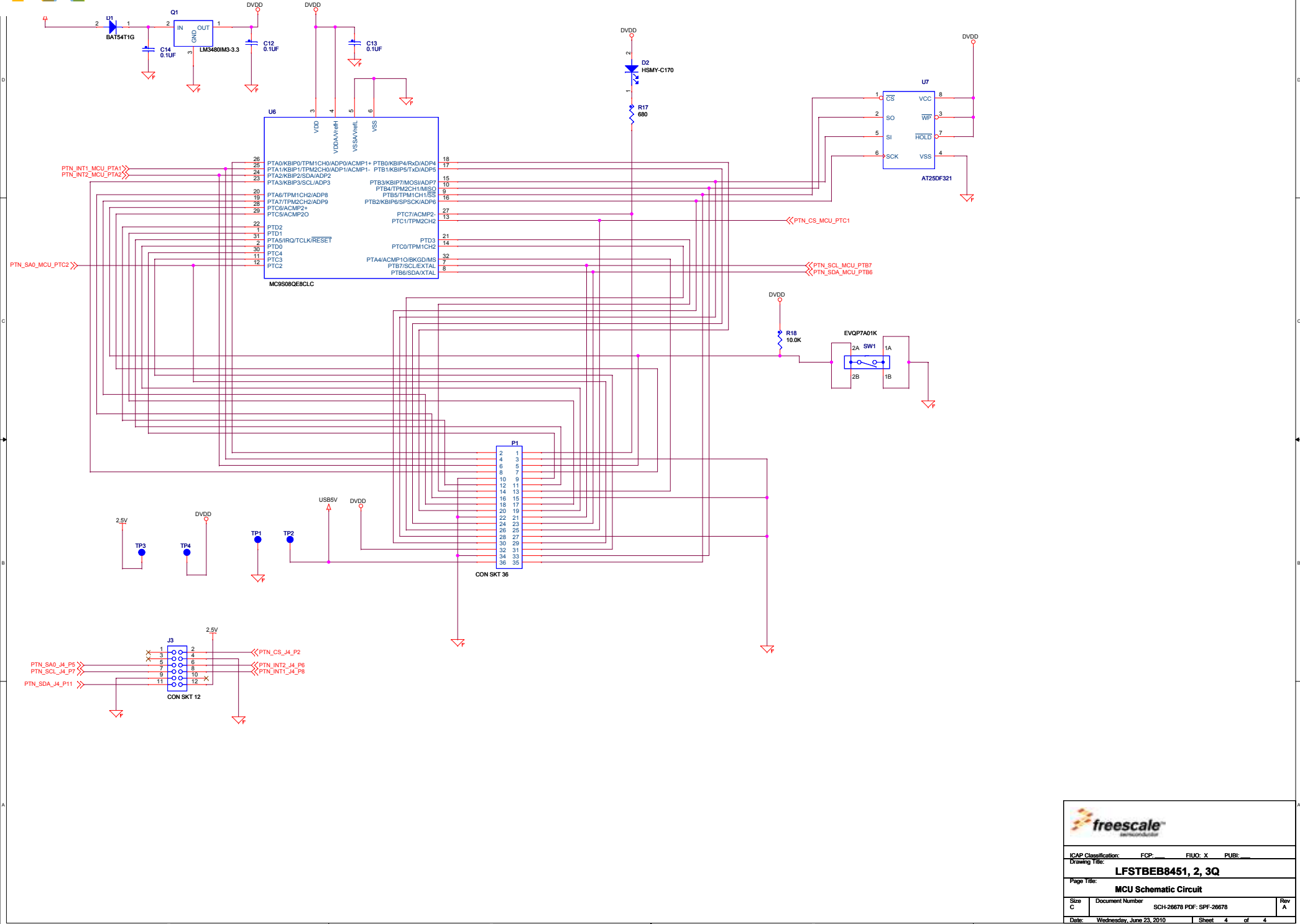
All capacitors are in uF, some are 10% or 20%
 All voltages are DC
 All polarized capacitors are tantalum

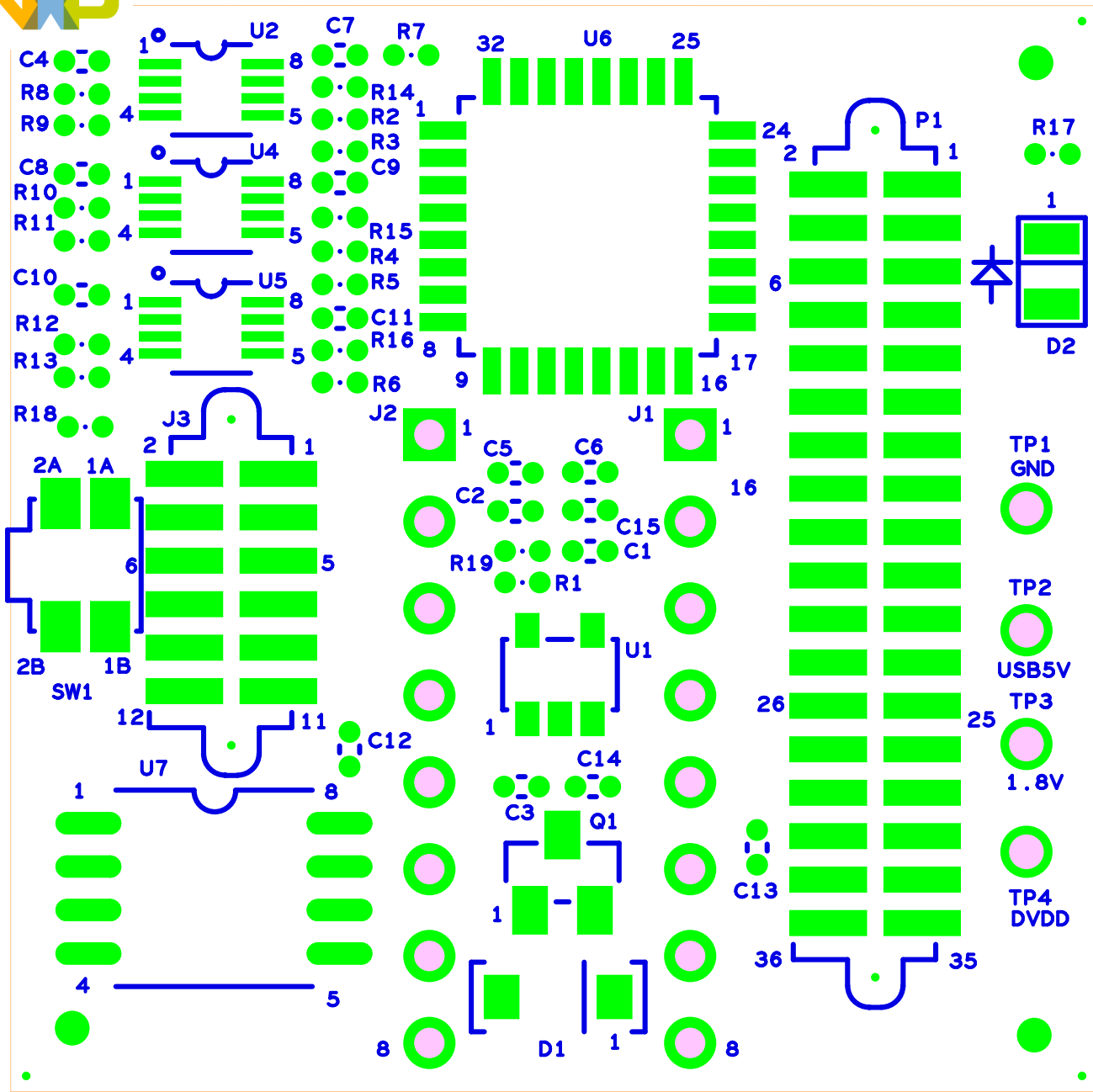
2. Interrupted lines coded with the same letter or letter combinations are electrically connected.
3. Device type number is for reference only. The number varies with the manufacturer.
4. Special signal usage:
 _B Denotes - Active-Low Signal
 <> or [] Denotes - Vectored Signals
5. Interpret diagram in accordance with American National Standards Institute specifications, current revision, with the exception of logic block symbology.

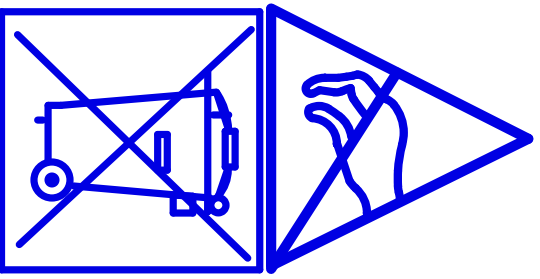
| | | | |
|--------------------|---|----------|--------|
| | | | |
| Drawing Title: | | | |
| LFSTBEB845X | | | |
| Page Title: | | | |
| NOTES | | | |
| Size B | Document Number SCH-26678 PDF: SPF-26678 | Rev A | |
| Date: | Wednesday, June 23, 2010 | Sheet | 2 of 4 |



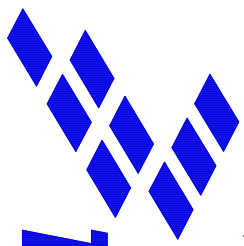
| | | |
|--|--|-------|
| | | |
| Drawing Title: LFSTBEB845X | | |
| Page Title: LFSTBEB845x Schematic | | |
| Size B | Document Number SCH-26678 PDF: SPF-26678 | Rev A |
| Date: Tuesday, September 14, 2010 | Sheet 3 of 4 | |







ONLY WITH
MMA8451Q
MMA8452Q
MMA8453Q

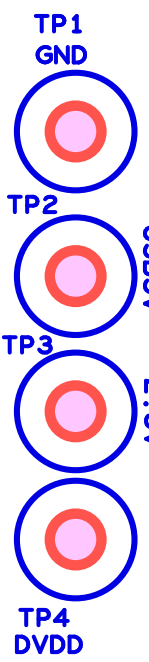
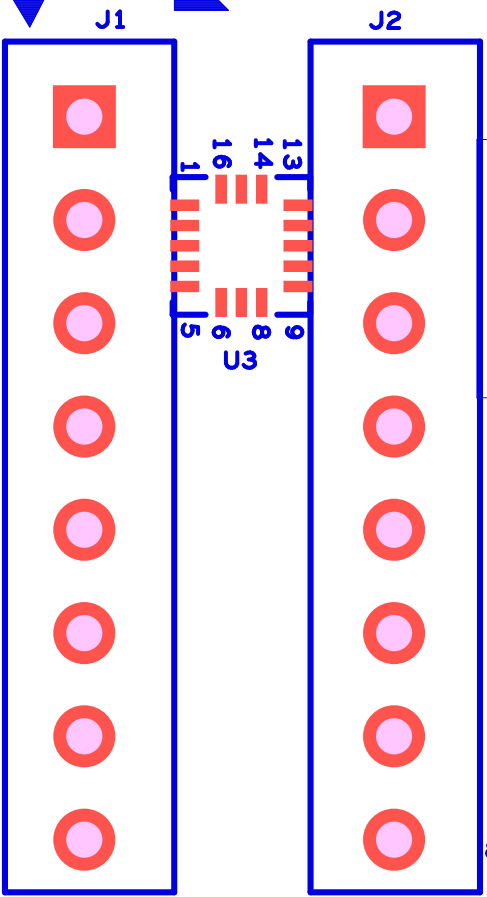


freescale
XtrinsicTM

START
SWITCH

S/N -
700 -
SCH -

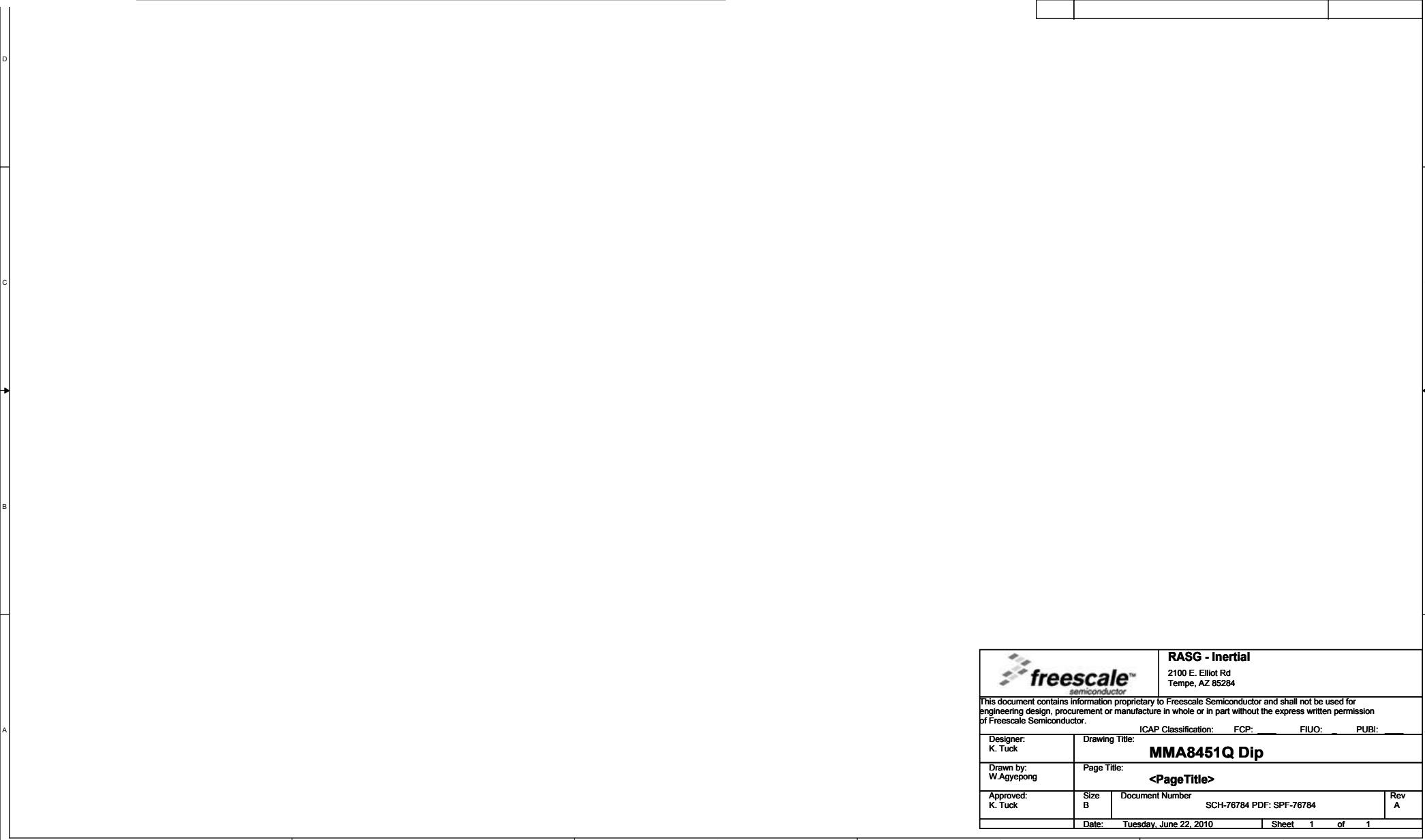
Sensor Tool Box
MMA845X
LFSTBEB845X
Evaluation Board




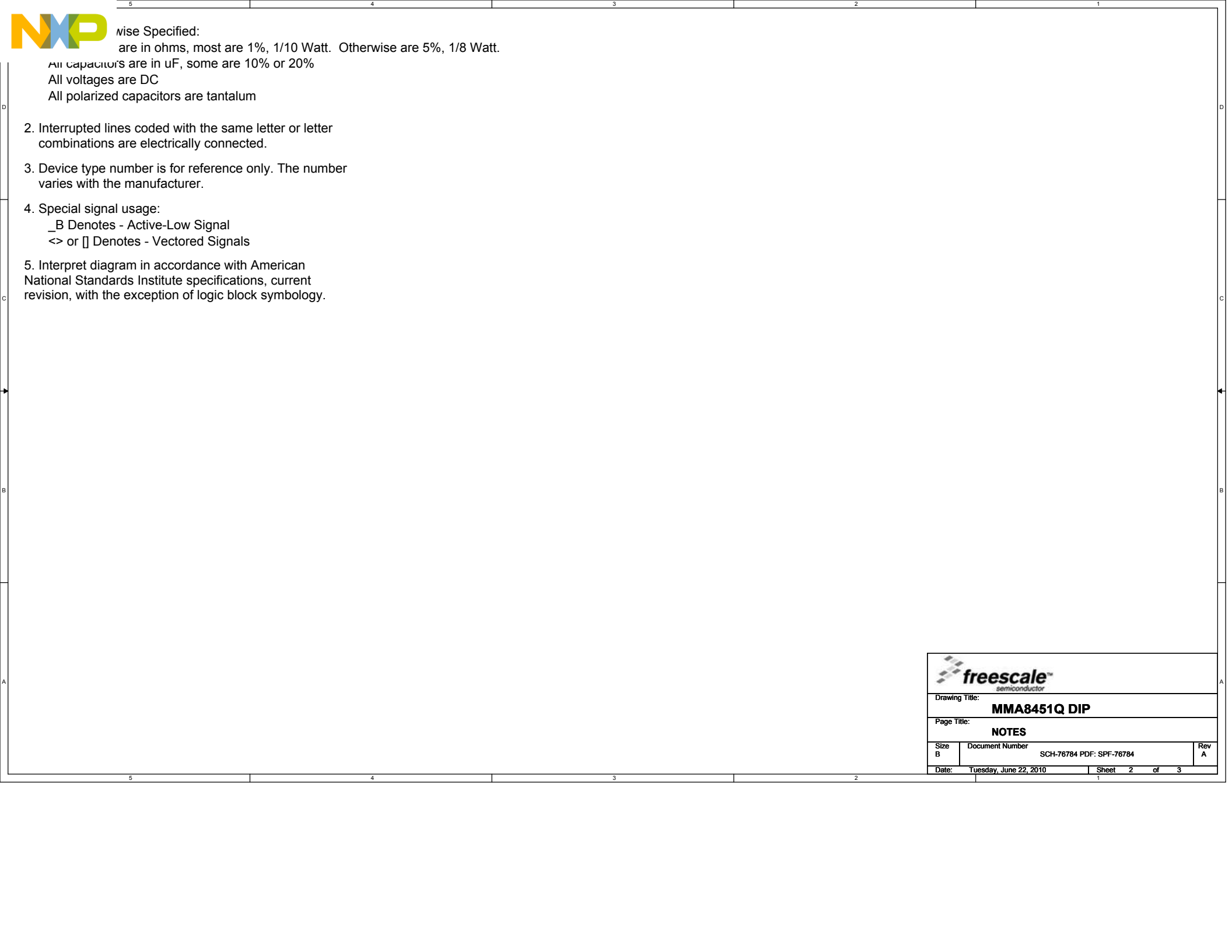


| | |
|---|-------------------|
| 5 | Table of Contents |
| 2 | Revision History |
| 1 | Schematic |

| Revisions | | |
|-----------|------------------|---------|
| Rev | Description | Date |
| A | Original Release | 6-22-10 |
| | | |



| | | | |
|---|--|--|---|
|  | | RASG - Inertial 2100 E. Elliot Rd Tempe, AZ 85284 | |
| This document contains information proprietary to Freescale Semiconductor and shall not be used for engineering design, procurement or manufacture in whole or in part without the express written permission of Freescale Semiconductor. | | | |
| Designer: K. Tuck | | Drawing Title: MMA8451Q Dip | |
| Drawn by: W. Agyepong | | Page Title: <PageTitle> | |
| Approved: K. Tuck | | Size B | Document Number SCH-76784 PDF: SPF-76784 |
| Date: Tuesday, June 22, 2010 | | Sheet 1 | Rev A |
| Date: Tuesday, June 22, 2010 | | Sheet 1 | of 1 |

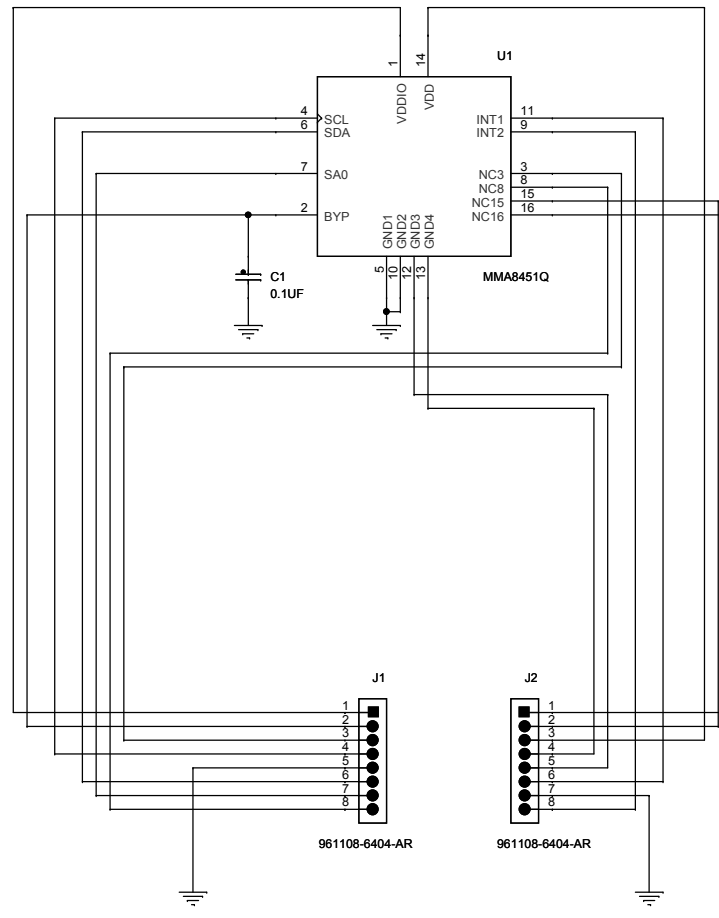


otherwise Specified:
 are in ohms, most are 1%, 1/10 Watt. Otherwise are 5%, 1/8 Watt.

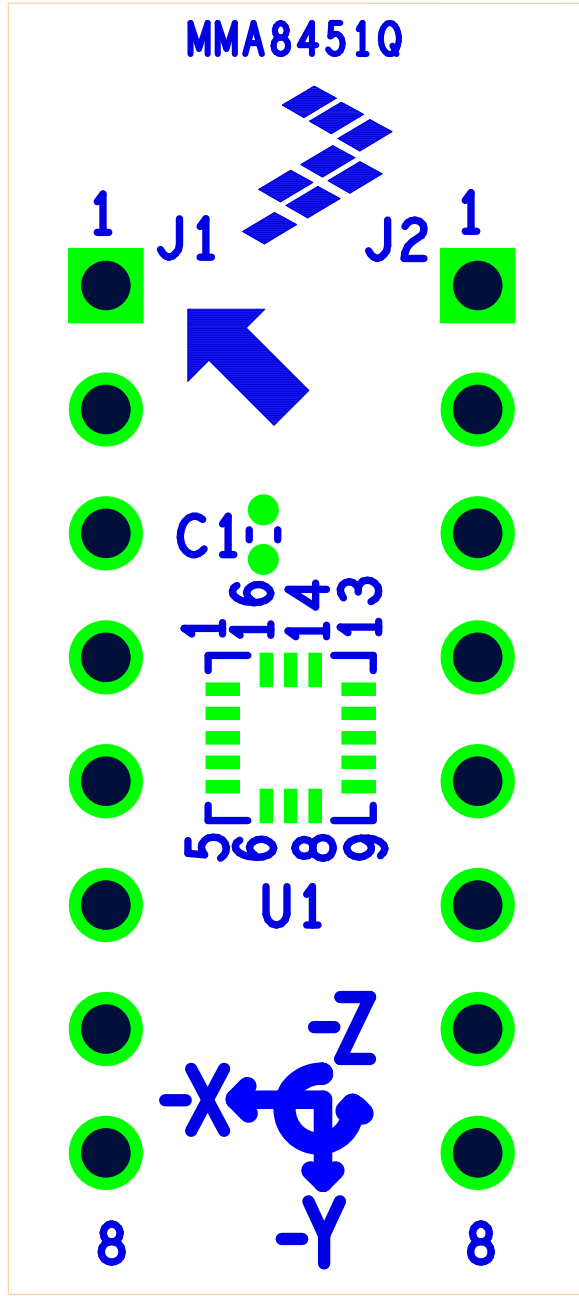
All capacitors are in uF, some are 10% or 20%
 All voltages are DC
 All polarized capacitors are tantalum

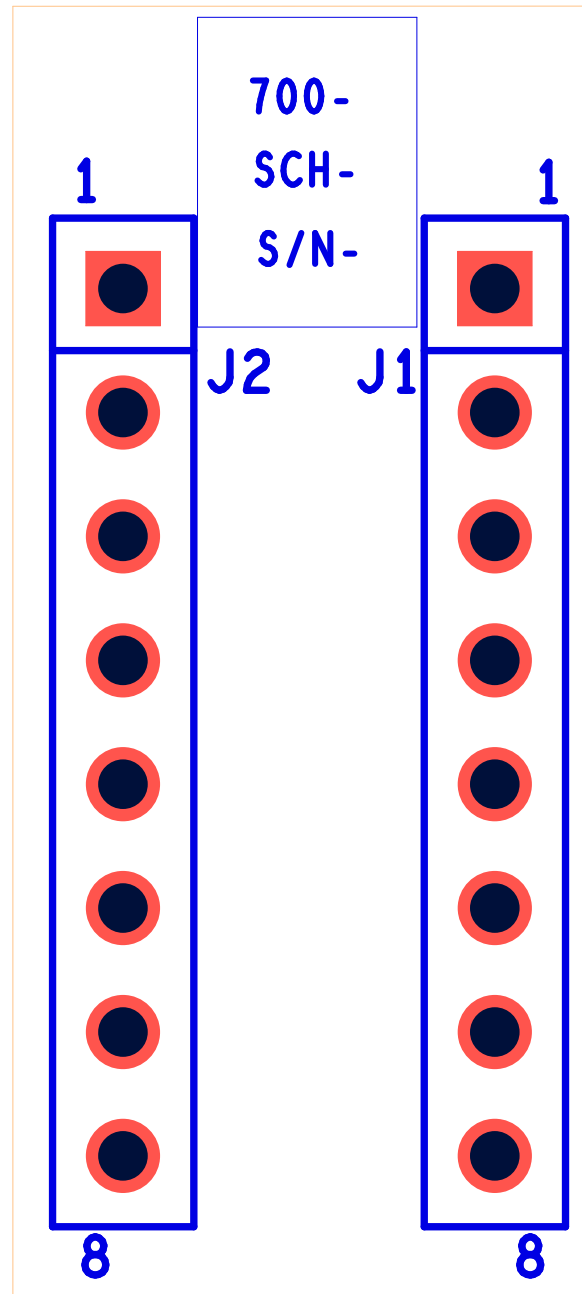
2. Interrupted lines coded with the same letter or letter combinations are electrically connected.
3. Device type number is for reference only. The number varies with the manufacturer.
4. Special signal usage:
 _B Denotes - Active-Low Signal
 <> or [] Denotes - Vectored Signals
5. Interpret diagram in accordance with American National Standards Institute specifications, current revision, with the exception of logic block symbology.

| | | |
|---------------------|---|--------------|
| | | |
| Drawing Title: | | |
| MMA8451Q DIP | | |
| Page Title: | | |
| NOTES | | |
| Size B | Document Number SCH-76784 PDF: SPF-76784 | Rev A |
| Date: | Tuesday, June 22, 2010 | Sheet 2 of 3 |



| | | |
|---------------------------------------|--|-------|
| | | |
| Drawing Title: MMA8451Q DIP | | |
| Page Title: MMA8451Q Schematic | | |
| Size B | Document Number SCH-76784 PDF: SPF-76784 | Rev A |
| Date: Tuesday, June 22, 2010 | Sheet 3 of 3 | |

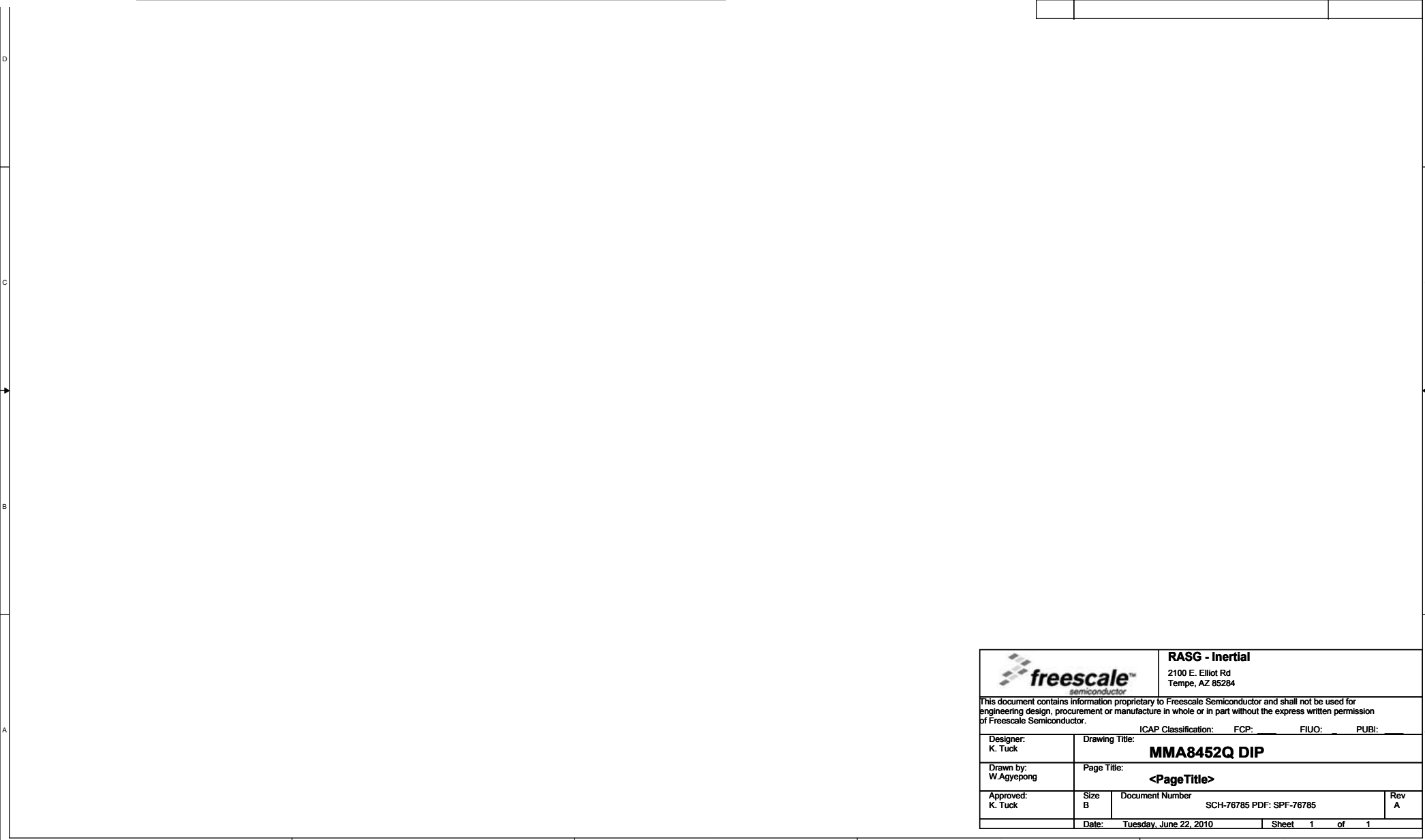




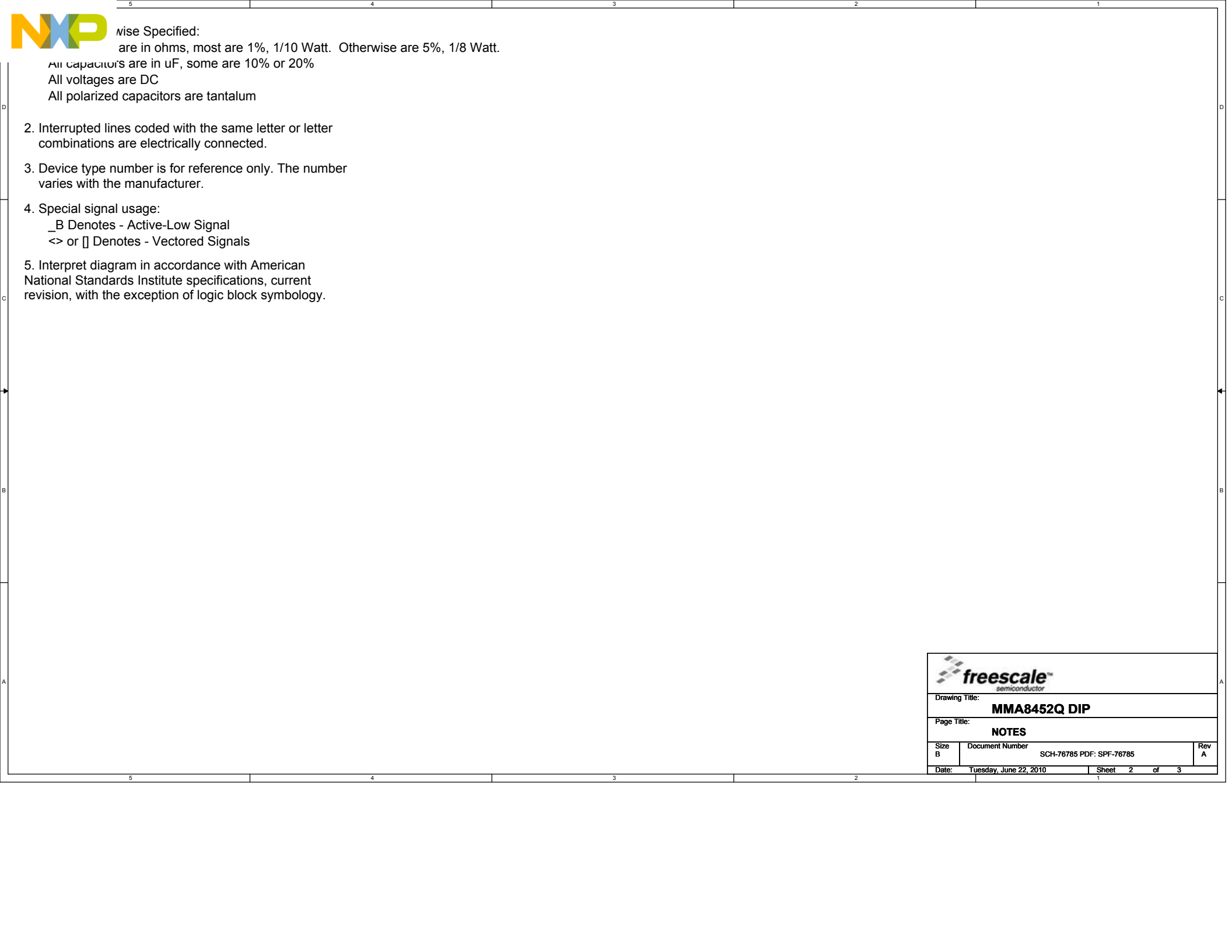


| | |
|---|-------------------|
| 5 | Table of Contents |
| 3 | 1) Schematic |

| Revisions | | |
|-----------|------------------|---------|
| Rev | Description | Date |
| A | Original Release | 6-22-10 |
| | | |



| | | | |
|---|--|--|---|
| | | RASG - Inertial 2100 E. Elliot Rd Tempe, AZ 85284 | |
| This document contains information proprietary to Freescale Semiconductor and shall not be used for engineering design, procurement or manufacture in whole or in part without the express written permission of Freescale Semiconductor. | | | |
| Designer: K. Tuck | | Drawing Title: MMA8452Q DIP | |
| Drawn by: W. Agyepong | | Page Title: <PageTitle> | |
| Approved: K. Tuck | | Size B | Document Number SCH-76785 PDF: SPF-76785 |
| Date: Tuesday, June 22, 2010 | | Sheet 1 | Rev A |
| Date: Tuesday, June 22, 2010 | | Sheet 1 | of 1 |

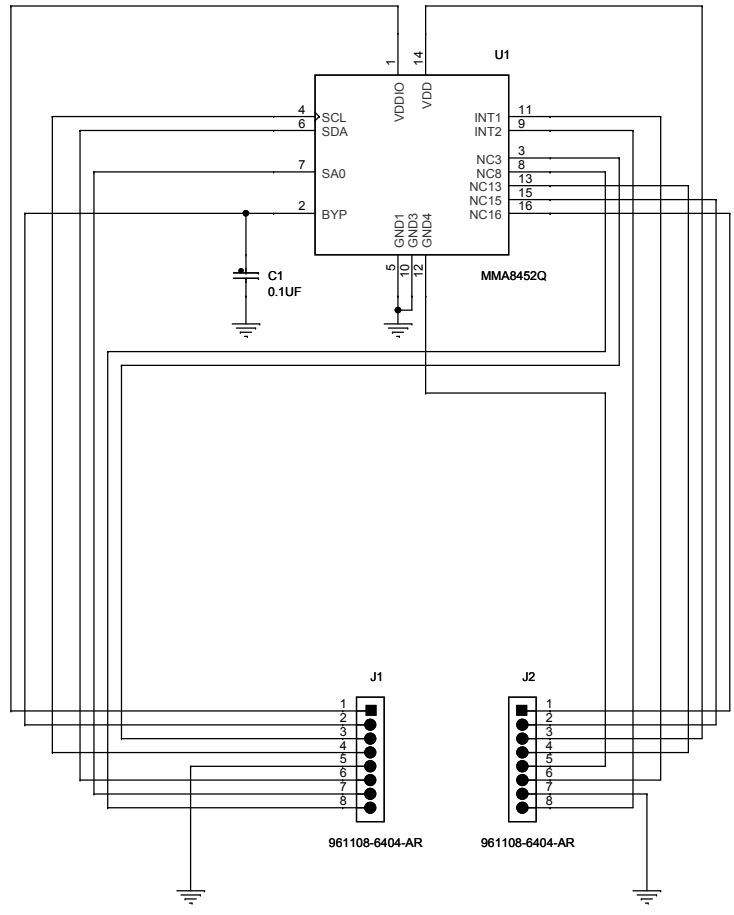


otherwise Specified:
 are in ohms, most are 1%, 1/10 Watt. Otherwise are 5%, 1/8 Watt.

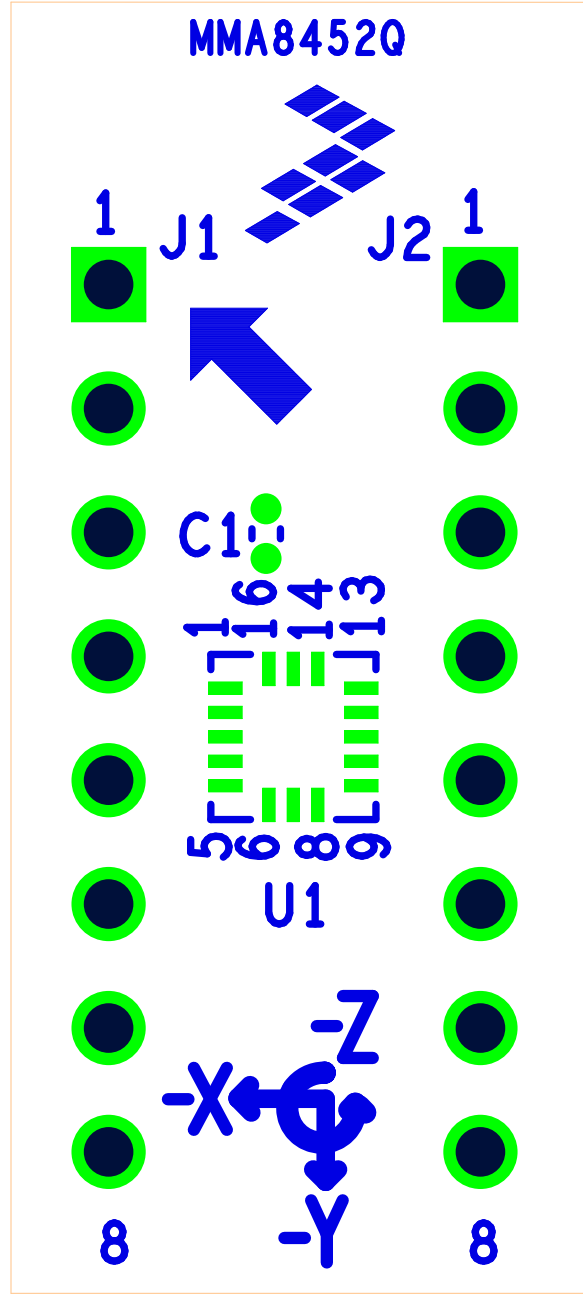
All capacitors are in uF, some are 10% or 20%
 All voltages are DC
 All polarized capacitors are tantalum

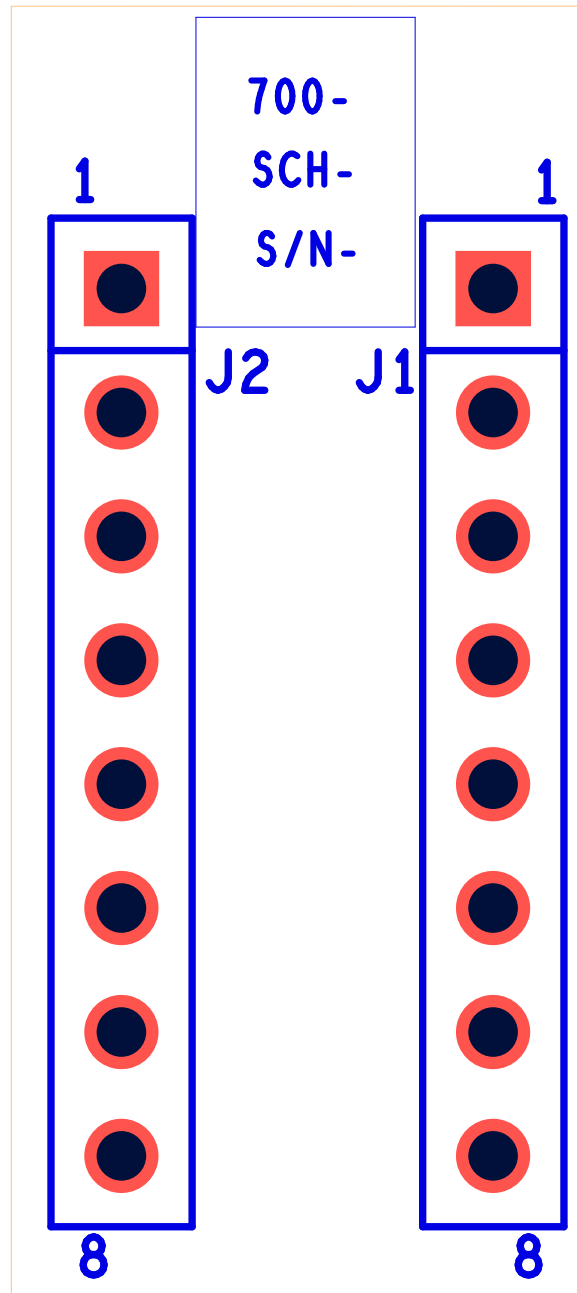
2. Interrupted lines coded with the same letter or letter combinations are electrically connected.
3. Device type number is for reference only. The number varies with the manufacturer.
4. Special signal usage:
 _B Denotes - Active-Low Signal
 <> or [] Denotes - Vectored Signals
5. Interpret diagram in accordance with American National Standards Institute specifications, current revision, with the exception of logic block symbology.

| | | |
|------------------------------------|---|----------|
| | | |
| Drawing Title: MMA8452Q DIP | | |
| Page Title: NOTES | | |
| Size B | Document Number SCH-76785 PDF: SPF-76785 | Rev A |
| Date: Tuesday, June 22, 2010 | Sheet 2 of 3 | 1 |



| | | |
|---------------------------|--------------------------|--------------|
| | | |
| Drawing Title: | | |
| MMA8452Q DIP | | |
| Page Title: | | |
| MMA8452Q Schematic | | |
| Size | Document Number | Rev |
| B | SCH-76785 PDF: SPF-76785 | A |
| Date: | Tuesday, June 22, 2010 | Sheet 3 of 3 |

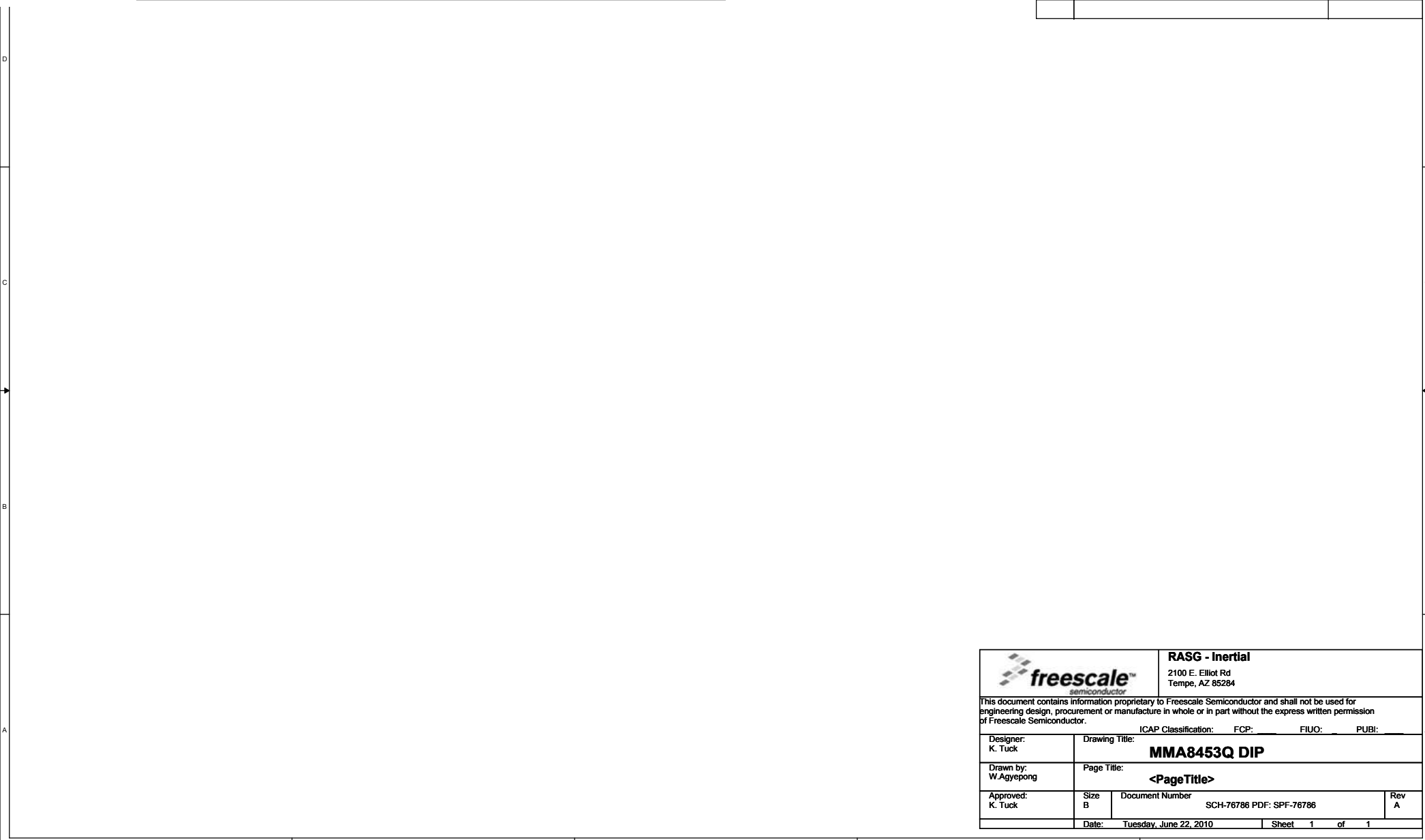




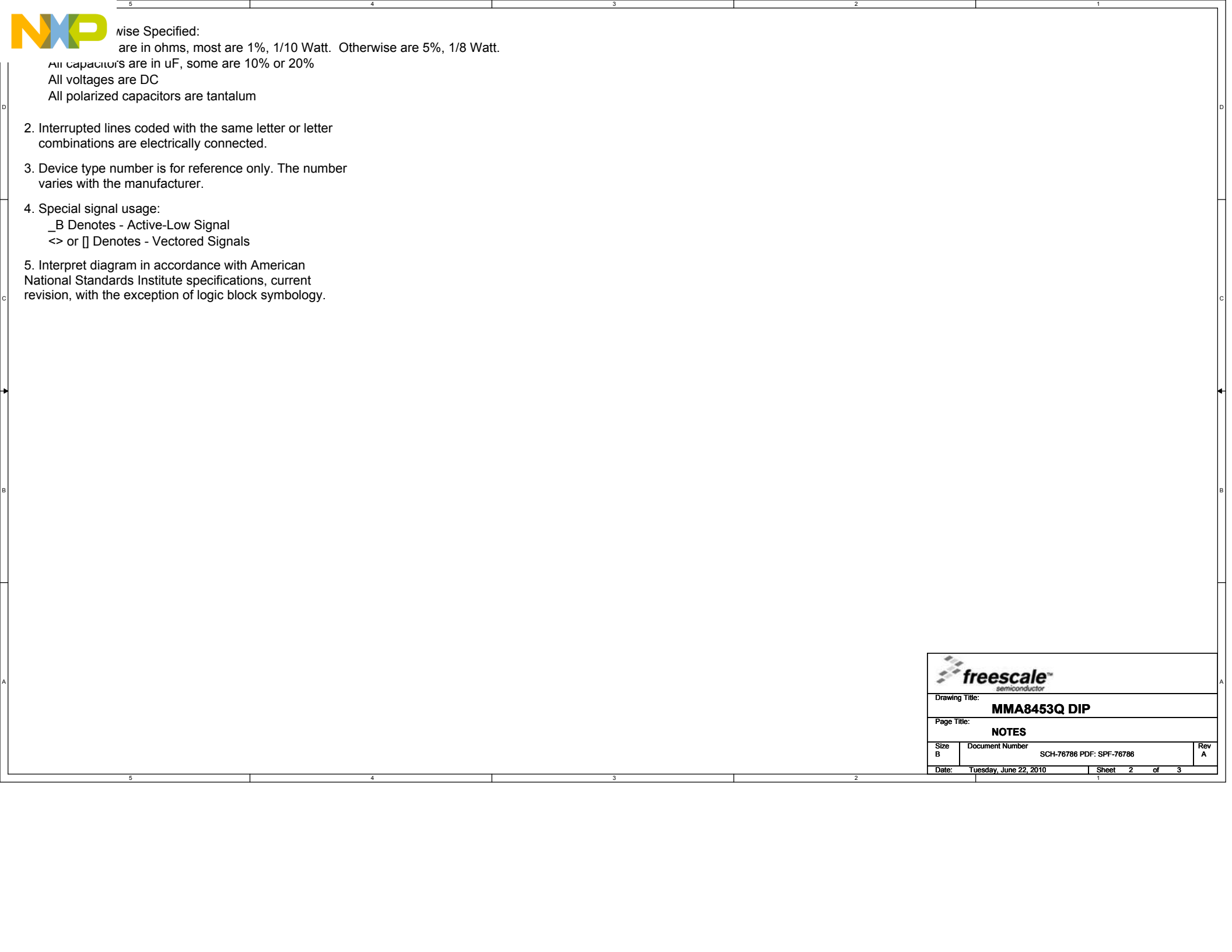


| | |
|---|-------------------|
| 5 | Table of Contents |
| 3 | 1) Schematic |

| Revisions | | |
|-----------|------------------|---------|
| Rev | Description | Date |
| A | Original Release | 6-22-10 |
| | | |



| | | | |
|---|--|--|---|
| | | RASG - Inertial 2100 E. Elliot Rd Tempe, AZ 85284 | |
| This document contains information proprietary to Freescale Semiconductor and shall not be used for engineering design, procurement or manufacture in whole or in part without the express written permission of Freescale Semiconductor. | | | |
| Designer: K. Tuck | | Drawing Title: MMA8453Q DIP | |
| Drawn by: W. Agyepong | | Page Title: <PageTitle> | |
| Approved: K. Tuck | | Size B | Document Number SCH-76786 PDF: SPF-76786 |
| Date: Tuesday, June 22, 2010 | | Sheet 1 | of 1 |
| Rev A | | Rev A | |

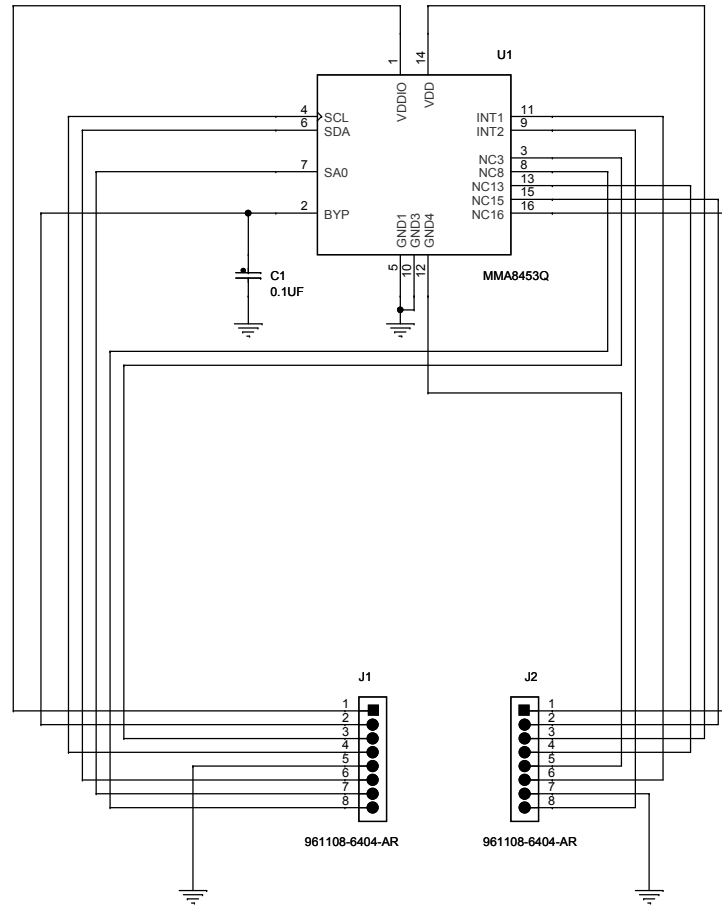


otherwise Specified:
 are in ohms, most are 1%, 1/10 Watt. Otherwise are 5%, 1/8 Watt.

All capacitors are in uF, some are 10% or 20%
 All voltages are DC
 All polarized capacitors are tantalum

2. Interrupted lines coded with the same letter or letter combinations are electrically connected.
3. Device type number is for reference only. The number varies with the manufacturer.
4. Special signal usage:
 _B Denotes - Active-Low Signal
 <> or [] Denotes - Vectored Signals
5. Interpret diagram in accordance with American National Standards Institute specifications, current revision, with the exception of logic block symbology.

| | | |
|------------------------------------|---|----------|
| | | |
| Drawing Title: MMA8453Q DIP | | |
| Page Title: NOTES | | |
| Size B | Document Number SCH-76786 PDF: SPF-76786 | Rev A |
| Date: Tuesday, June 22, 2010 | Sheet 2 of 3 | 1 |



| | | |
|---------------------------------------|---|----------|
| | | |
| Drawing Title: MMA8453Q DIP | | |
| Page Title: MMA8453Q Schematic | | |
| Size B | Document Number SCH-76786 PDF: SPF-76786 | Rev A |
| Date: Tuesday, June 22, 2010 | Sheet 3 of 3 | |

