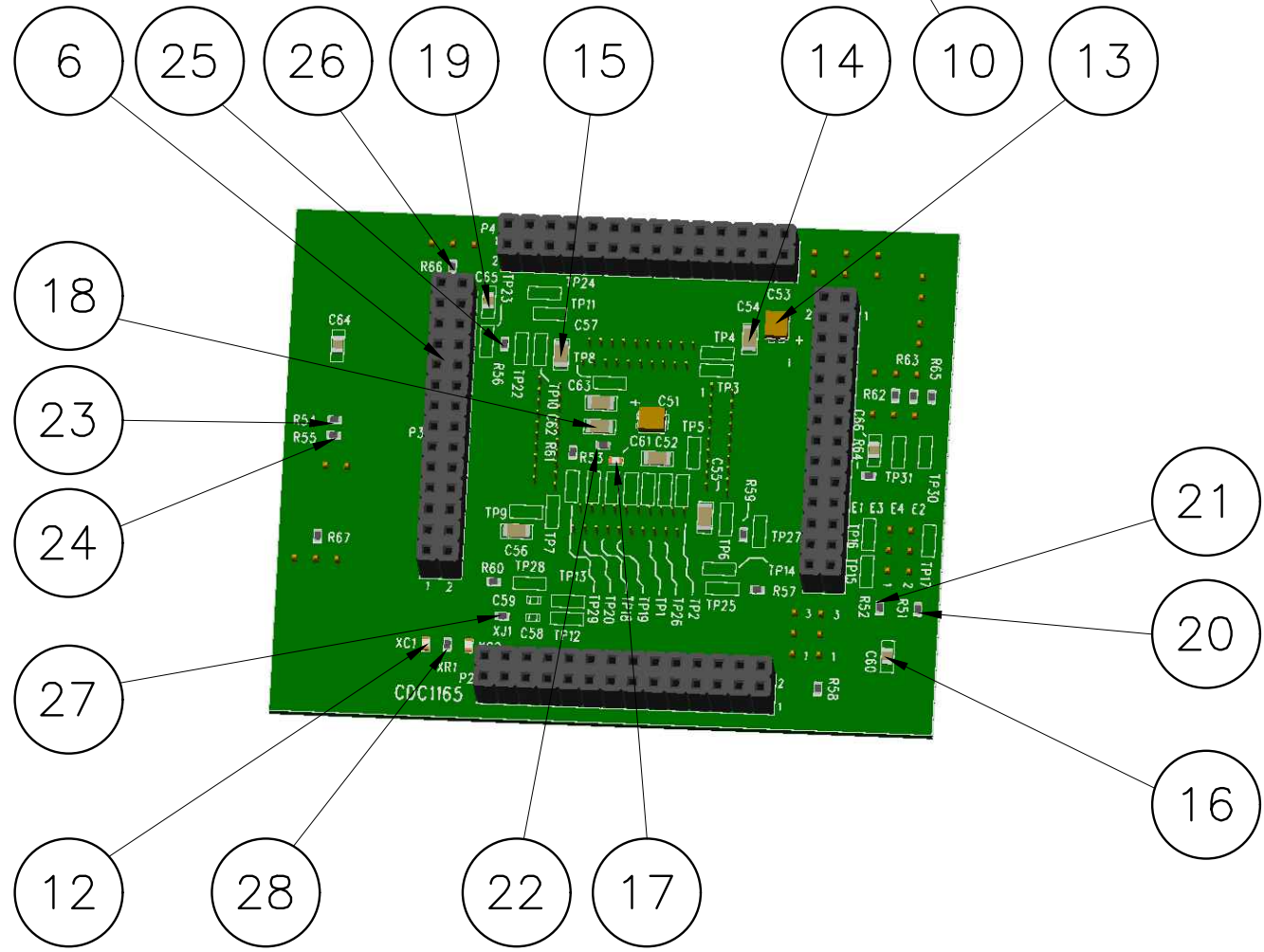


29	6	Shunt	3M	929955-06
----	---	-------	----	-----------



28	1	Resistor	Bourns	CR0603-JW-105ELF
27	1	Resistor	Vishay	CRCW06030000Z0EA
26	1	Resistor	Vishay	CRCW0603470RFKEA
25	1	Resistor	Bourns	CR0603-JW-101ELF
24	1	Resistor	Bourns	CR0603-JW-102ELF
23	1	Resistor	Panasonic	ERA-V15J122V
22	1	Resistor	KOA Speer	RK73B1JTTD472J
21	11	Resistor	Bourns	CR0603-JW-473ELF
20	1	Resistor	Bourns	CR0603-JW-103ELF
19	3	Ceramic Capacitor	AVX	08055C103KAT2A
18	1	Ceramic Capacitor	AVX	12065C333KAT2A
17	1	Ceramic Capacitor	AVX	06035C332KAT2A
16	1	Ceramic Capacitor	AVX	08055A101KAT2A
15	2	Ceramic Capacitor	Yageo	12062R473K9B20D
14	4	Ceramic Capacitor	Yageo	12062R104K9B20D
13	2	Tantalum Capacitor	AVX	TAJB106M016R
12	2	Ceramic Capacitor	AVX	06035A220JAT2A
11	1	Tactile Switch	Omron	B3S-1002
10	1	8.0 MHz Crystal	ECS	ECS-80-18-5PX
9	1	IC Dip Socket	Mill-max	214-44-314-01-670800
8	1	IC Tri-State Buffer	On Semi	MC74AC125DTR2G
7	1	IC Reset	On Semi	MC34164DM-5R2G
6	4	2 X 14 Socket	3M	929852-01-14-RA
5	1	2 X 3 Header	Samtec	TSW-103-07-G-D
4	6	1 X 3 Header	Tyco Elec.	5-146276-3
3	6	1 X 2 Header	Tyco Elec.	5-146276-2
2	1	ZIF Socket	Yamaichi	IC51-0804-711
1	1	PCB	Freescale Semi	CDC1165

ITEM	QTY	NAME	MATERIAL	DESCRIPTION
------	-----	------	----------	-------------

Parts List

FILE NAME	LFMMPBS12KFM.DWG
CONTRACT NO	-
DRAWN	03/19/08 MJL
CHECK	04/16/08 CJW
APPR.	
ISSUED	



NXP Semiconductors
28125 Cabot Drive, Suite 100
Novi, Michigan 48377

MC9S12(X)D/K Family QFP Programming Adapter
80 PIN 0.65mm Lead Free

NOTE: DIMENSIONS ARE IN MILLIMETERS DO NOT SCALE DRAWING	SIZE B	FSCM NO -	DWG NO LFMMPBS12KFM	REV
SCALE N/A	WEIGHT	SHEET 1 of 2		