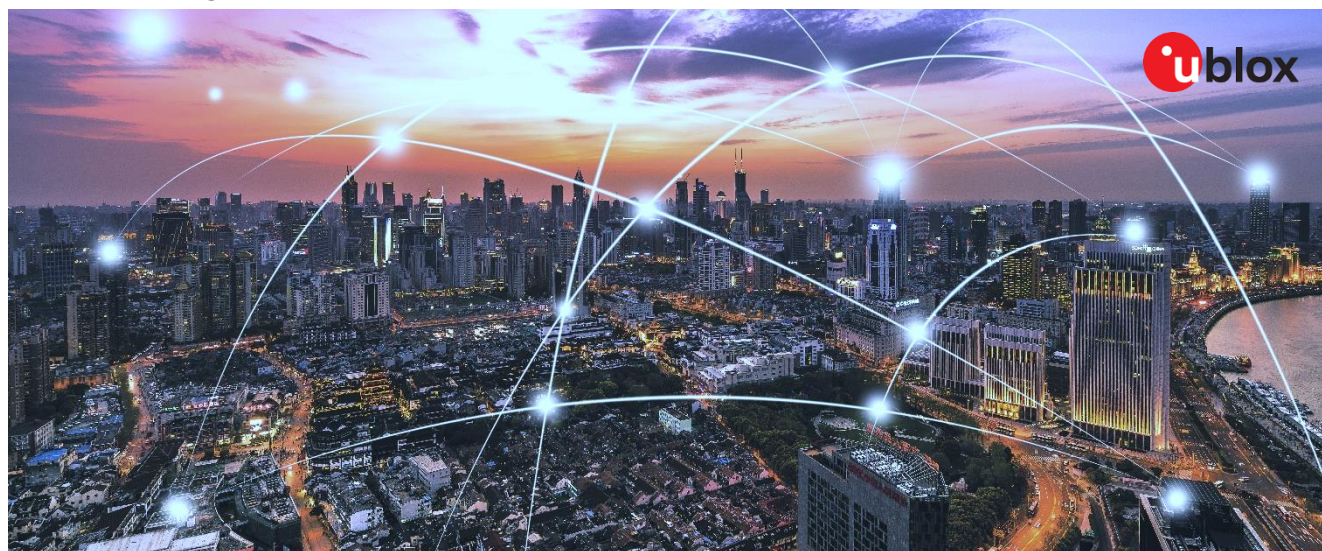







U-BLOX WI-FI+BLUETOOTH MODULES WITH NXP SILICON

Selection guide for IOT Applications



							
Type Name	LILY-W1	MAYA-W1	MAYA-W2	JODY-W2	JODY-W3	M2-JODY-W2	M2-JODY-W3
NXP Chipset	88W8801	IW416	IW611/12	88W8987	88Q(W)9098 AW690	88W8987	88W9098
Wi-Fi®	 1x1 SB (2.4 GHz)	 1x1 DB (2.4/5 GHz)	 1x1 DB (2.4/5 GHz)	 1x1 DB (2.4/5 GHz)	 2x2 CDW DB (2.4/5 GHz)	 1x1 DB (2.4/5 GHz)	 2x2 CDW DB (2.4/5 GHz)
Bluetooth®	-	5.2 BR/EDR/LE	5.2 BR/EDR/LE	5.2 BR/EDR/LE	5.3 BR/EDR/LE	5.2 BR/EDR/LE	5.3 BR/EDR/LE
IEEE 802.15.4 Interface	-	-	SPI*	-	-	-	-
Wi-Fi Host Interface	SDIO, USB	SDIO	SDIO	SDIO	SDIO, PCIe	SDIO	SDIO, PCIe
Bluetooth interface	-	UART, PCM	UART, PCM	UART, PCM	UART, PCM	UART, PCM	UART, PCM
Dimensions (mm)	10 x 14 x 2.2/3.8	10.4 x 14.3 x 1.8	10.4 x 14.3 x 1.9	13.8 x 19.8 x 2.5	13.8 x 19.8 x 2.5	22 x 30 x 4.2	22 x 30 x 4.2
Certifications and grades	Global Professional	Global Professional	Global Pro / Std	Global Auto / Pro	Global Auto / Pro	Global Standard	Global Standard
Operating Temperature	+ 85°C - 40°C	+ 85°C - 40°C	+ 85°C - 40°C	+ 105/85°C* - 40°C	+ 85°C - 40°C	+85°C - 40°C	+ 85°C - 40°C
Software Support	RTOS, Linux	RTOS, Linux	RTOS, Linux, Android	RTOS, Linux, Android	Linux, Android	RTOS, Linux, Android	Linux, Android
Antennas	Integrated or pin*	2 U.FL or 2 pins or PCB*	2 U.FL/pins or PCB/pin*	2	2 or 3*	2 U.FL	3 U.FL