

AN13938

PN7220 - Analog and RF settings

Rev. 1.0 — 7 July 2023

Application note

Document information

Information	Content
Keywords	PN7220, analog settings, RF settings
Abstract	This document describes how to adjust analog and RF settings on the PN7220.



Revision history

Revision history

Rev	Date	Description
v.1.0	20230707	Initial version

1 Introduction

This document describes how to adjust analog and RF settings on the PN7220.

All these settings are stored permanently in EEPROM. The PN7220 is delivered with default settings, which are linked to the FW, i.e. the FW update overwrites all related settings.

These settings define the analog and RF behavior, and typically it is required to adjust some of them to adapt the antenna design and achieve the required performance (transmit power, waveshape behavior, receive sensitivity, loading behavior, current consumption, etc.). Normally NXP provides a GUI to support and simplify this adjustment and handling of settings (refer to [\[1\]](#)). But currently for the PN7220, the tool chain of the PN5190 (refer to [\[2\]](#)) has to be used to find the correct settings.

The settings then have to be manually transferred from the PN5190 XML file into the XML structure of the PN7220. Afterwards the PN7220 XML file can be pushed to the Android DH, and then be applied with a small Android application (CockPit_Util_V1_0), which writes all settings into the PN7220 EEPROM.

2 Preparation

Some preparation details must be done to be able store the correct settings into the PN7220.

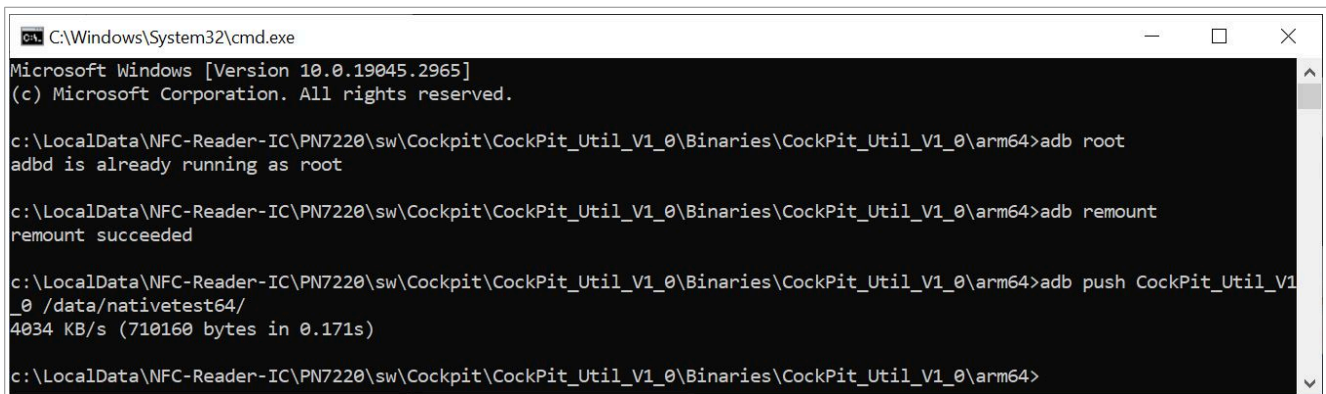
2.1 Install CockPit_Util_V1_0

The tool package includes the CockPit_Util_V1_0, which must be executed on the Android DH to save all settings into PN7220.

Push this file to the Android system, into /data/nativetest64/ folder.

Example (as shown in:

- open a CMD shell in c:\localfolder\PN7220\whatever_folder_you_use\CockPit_Util_V1_0\arm64\
- adb root
- adb remount
- adb push CockPit_Util_V1_0 /data/nativetest64/



```
C:\Windows\System32\cmd.exe
Microsoft Windows [Version 10.0.19045.2965]
(c) Microsoft Corporation. All rights reserved.

c:\LocalData\NFC-Reader-IC\PN7220\sw\Cockpit\CockPit_Util_V1_0\Binaries\CockPit_Util_V1_0\arm64>adb root
adb is already running as root

c:\LocalData\NFC-Reader-IC\PN7220\sw\Cockpit\CockPit_Util_V1_0\Binaries\CockPit_Util_V1_0\arm64>adb remount
remount succeeded

c:\LocalData\NFC-Reader-IC\PN7220\sw\Cockpit\CockPit_Util_V1_0\Binaries\CockPit_Util_V1_0\arm64>adb push CockPit_Util_V1_0 /data/nativetest64/
4034 KB/s (710160 bytes in 0.171s)

c:\LocalData\NFC-Reader-IC\PN7220\sw\Cockpit\CockPit_Util_V1_0\Binaries\CockPit_Util_V1_0\arm64>
```

Figure 1. Installation of CockPit_Util_V1_0

2.2 Prepare XML settings

The CockPit_Util_V1_0 requires an XML file, containing all PN7220 RF and analog settings. These settings must be manually entered or changed. It is strongly recommended to start with the default settings, and only enter those changes, which are required.

The starting point shall be the default settings from PN5190, as provided as part of the NFC Cockpit (refer to [\[1\]](#)).

In c:\nxp\NxpNfcCockpit_v7.2.0.0\cfg\PN5190\Default\ there are two set of settings provided:

- EEPROM_Settings_FactoryDefault.xml
- EEPROM_Settings_EMVCODefault.xml

The factory default settings of the PN5190 are the ones, which come together with a FW update, and correspond to the PN7220 default settings, as applied in the NFC Mode.

The EMVCo default settings of the PN5190 correspond to the PN7220 default settings as applied in the EMVCo mode.

So from both PN5190 XML files, the one XML file for the PN7220 can be generated.

Since the PN5190 shall be used to adjust all antenna and analog design parameters and to derive the related settings using e.g. the NFC Cockpit, the PN7220 XML file requires two XML files from the PN5190: one for

the optimum NFC operation, and one for the optimum EMVCo operation, which then will be combined in the PN7220.

2.2.1 Use of PN5190

The easiest and best way to tune and adjust the antenna for the PN7220 is the usage of the PN5190 as design-in vehicle. The PN5190 provides all the required documentation and tools (like [3], [4] or [5]). The PNEV5190BP (see [6]) can be used as shown in Figure 2 to connect and drive the PN7220 antenna. The original 45 mm x 45 mm antenna of the PNEV5190BP can be cut off and replaced with the PN7220 antenna, connected with a short wire. The required tuning can be assembled on tuning board, and then all required adjustments (and even compliance tests) can be done the the PN5190, resp. the PNEV5190BP.

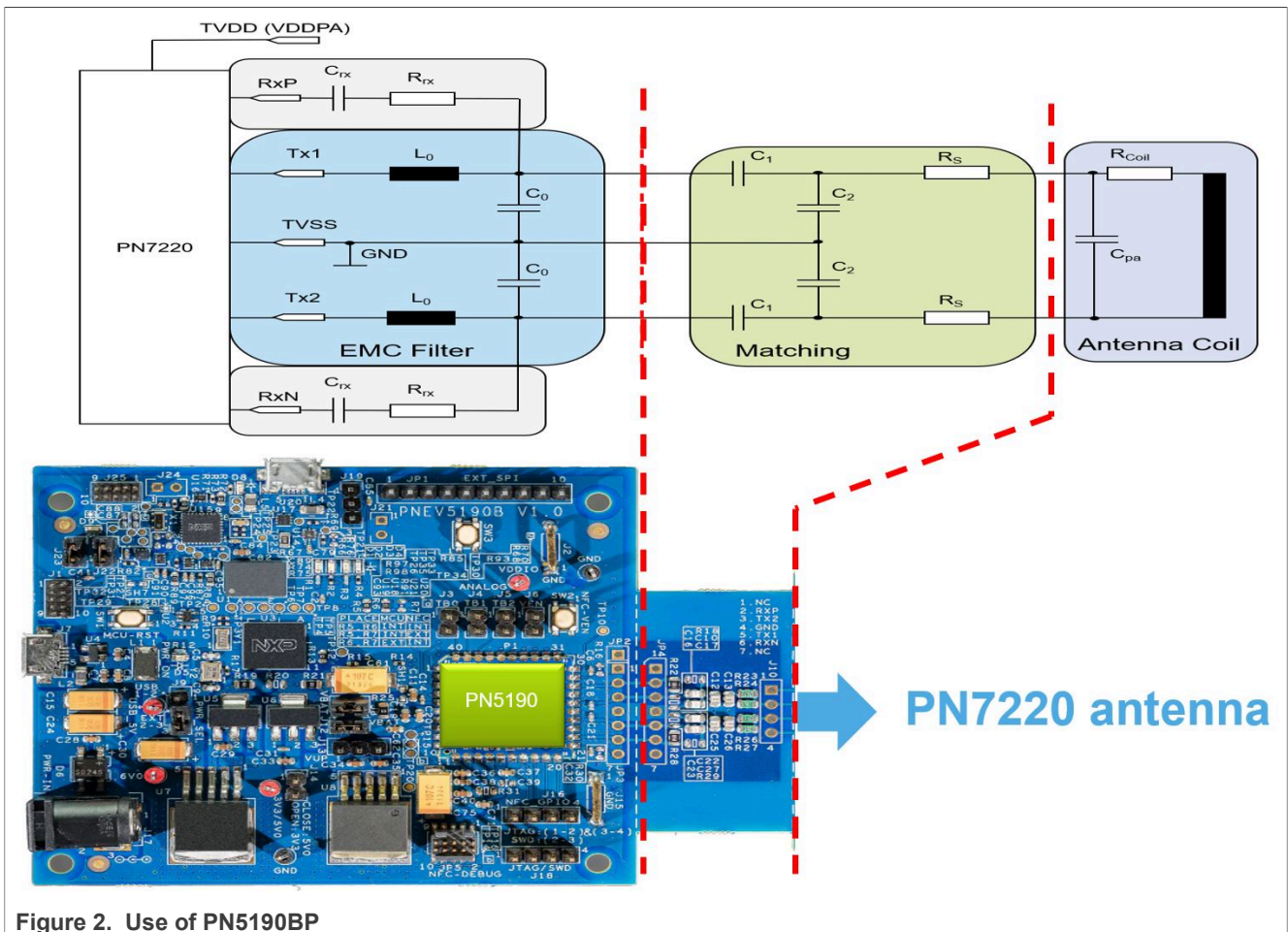


Figure 2. Use of PN5190BP

After all PN5190 settings are derived and saved into the PN5190 EEPROM, the NFC Cockpit provides the option <Dump EEPROM>, which then saves the settings in an XML file. This XML file can be used to copy the relevant settings manually into the PN7220 XML file.

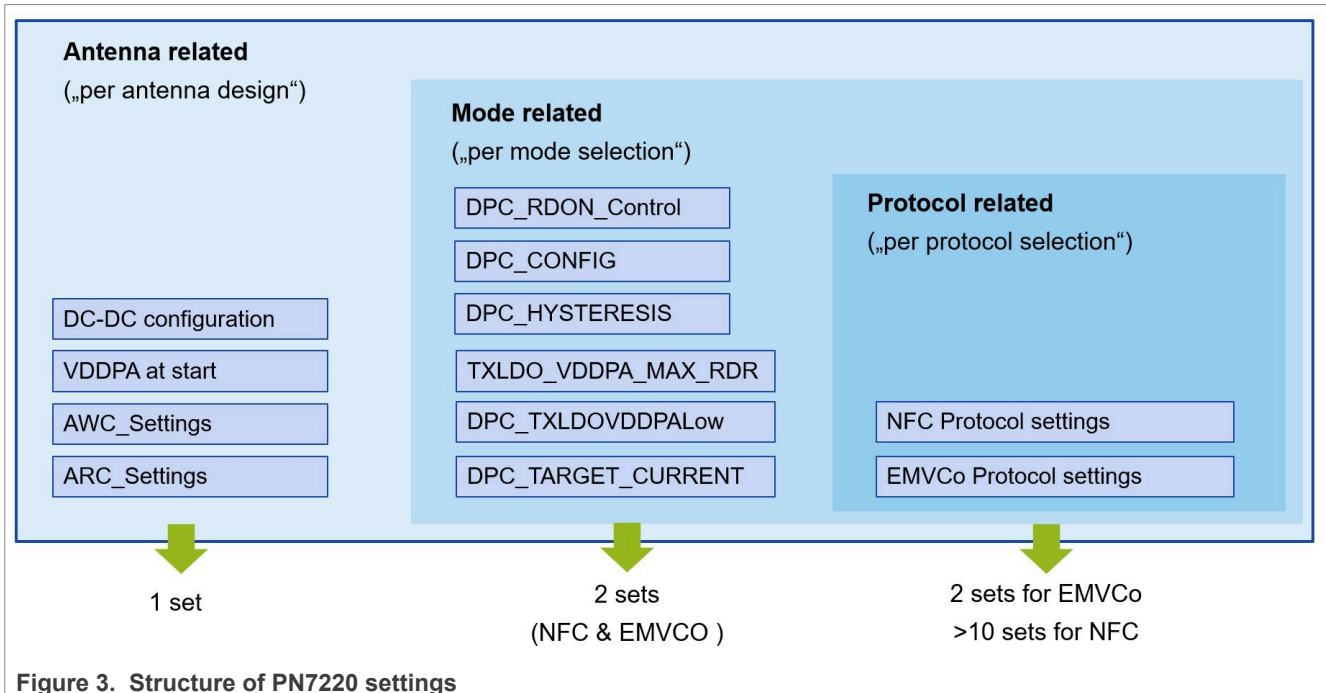
2.2.2 Relevant XML content

The PN7220 uses a number of RF and analog related settings, which can easily be handled in one XML file. But not all of them are really relevant for a proper and optimum operation. Since currently the adjustment of those analog settings is done with the PN5190 and its related tool chain, the settings then have to manually copied from the PN5190 XML into the PN7220 XML.

As a starting point, the default settings for NFC operation as well as for EMVCo operation are the same for PN5190 and PN7220: the PN5190 default settings are part from the NFC Cockpit package in c:\nxp\NxpNfcCockpit_v7.x.x\cfg\PN5190\Default\

Common Settings:

The PN7220 uses some common settings for both the NFC and the EMVCo operation as shown in [Figure 3](#) on the left side. These parameters are antenna-related and shall be used in both modes of operation.



Mode-related settings:

These settings are related to the mode of operation:

1. the DPC control (DPC_CONFIG)
2. the hysteresis settings (even though typically not to be changed)
3. the maximum allowed VDDPA (TXLDO_VDDPA_MAX_RDR)
4. the minimum allowed VDDPA (DPC_TXLDOVDDPALow) and the related RDON feature
5. the target current (DPC_TARGET_CURRENT)

These settings define the overall RF output power behavior, and therefore typically can be different between EMVCo operation (full power) and NFC operation (reduced power).

NFC-related settings:

```
<Region RegionName="USER_PMU" RegionAccess="RW" RegionType="DATA">
  <Parameter Name="PwrConfig" Offset="0x00" Value="0xE4" />
  <Parameter Name="DcdcConfig" Offset="0x01" Value="0x31" />
  <Parameter Name="TxldoConfig" Offset="0x02" Value="0xFFFFAEA7" />
  <Parameter Name="TxldoStartVddpa" Offset="0x06" Value="0x00" />
  <Parameter Name="TxLdoVddpaMaxRdr" Offset="0x07" Value="0x2A" />
  <Parameter Name="TxLdoVddpaMaxCard" Offset="0x08" Value="0x2A" />
  <Parameter Name="BoostDefaultVoltage" Offset="0x09" Value="0x1D" />

  <Region RegionName="DPC_SETTINGS" RegionAccess="RW" RegionType="DATA">
```

```

<Parameter Name="Config" Offset="0x68" Value="0x77" />
<Parameter Name="TargetCurrent" Offset="0x69" Value="0x008C" />
<Parameter Name="Hysteresis" Offset="0x6B" Value="0x14" />
<Parameter Name="RFU" Offset="0x6C" Value="0x6A" />
<Parameter Name="RFU" Offset="0x6D" Value="0x2A" />
<Parameter Name="Hysteresis_Unloading" Offset="0x6E" Value="0x0A" />
<Parameter Name="TXLDOVDDPALow" Offset="0x6F" Value="0x07" />
<Parameter Name="TXGSN" Offset="0x70" Value="0x03" />
<Parameter Name="VDDPALowLimitcontrol" Offset="0x71" Value="0x01" />
<Parameter Name="InitialRDOOn_RFOn" Offset="0x72" Value="0x03" />

```

EMVCo related settings:

```

<Region RegionName="DPC_SETTINGS_EMVCO" RegionAccess="RW" RegionType="DATA">
  <Parameter Name="Config" Offset="0x68E" Value="0x77" />
  <Parameter Name="TargetCurrent" Offset="0x68F" Value="0x0132" />
  <Parameter Name="Hysteresis" Offset="0x691" Value="0x14" />
  <Parameter Name="RFU" Offset="0x692" Value="0x6A" />
  <Parameter Name="RFU" Offset="0x693" Value="0x2A" />
  <Parameter Name="Hysteresis_Unloading" Offset="0x694" Value="0x0A" />
  <Parameter Name="TXLDOVDDPALow" Offset="0x695" Value="0x08" />
  <Parameter Name="TXGSN" Offset="0x696" Value="0x08" />
  <Parameter Name="VDDPALowLimitcontrol" Offset="0x697" Value="0x01" />
  <Parameter Name="InitialRDOOn_RFOn" Offset="0x698" Value="0x08" />

  <Region RegionName="USER_PMU_EMVCO" RegionAccess="RW" RegionType="DATA">
    <Parameter Name="TxLdoVddpaMaxRdr" Offset="0x6A6" Value="0x2A" />
  </Region>

```

Protocol-related settings:

A third section of settings is part of the RF Configuration, which is always copied into the register, when a certain protocol (like e.g. Type A 106) is loaded. These settings are protocol-related, and the PN7220 provides separate settings for A106, B106, F212, and F424 for the EMVCo operation and the NFC operation. All other supported NFC protocols have their own set of settings, which are only relevant in the NFC operation anyway.

On top of the protocol-related settings form the RF configuration area, there are the protocol-specific waveshaping settings, might be required to be different between NFC and EMVCo operation. These settings are added for the EMVCo operation (on top of the "normal" ones for NFC operation):

```

  <Parameter Name="ResidualAmplitudeLevel_EMVCoF212" Offset="0x5C"
Value="0xCF" />
  <Parameter Name="EdgeType_EMVCoF212" Offset="0x5D" Value="0x22" />
  <Parameter Name="EdgeStyleConfiguration_EMVCoF212" Offset="0x5E"
Value="0x65" />
  <Parameter Name="EdgeLength_EMVCoF212" Offset="0x5F" Value="0x10" />
  <Parameter Name="ResidualAmplitudeLevel_EMVCoF424" Offset="0x60"
Value="0xCE" />
  <Parameter Name="EdgeType_EMVCoF424" Offset="0x61" Value="0x22" />
  <Parameter Name="EdgeStyleConfiguration_EMVCoF424" Offset="0x62"
Value="0x55" />
  <Parameter Name="EdgeLength_EMVCoF424" Offset="0x63" Value="0x10" />

  <Region RegionName="RM_TECHNO_EMVCO_TX_SHAPING" RegionAccess="RW"
RegionType="DATA">
    <Parameter Name="ResidualAmplitudeLevel_EMVCoA106" Offset="0x50E"
Value="0x00" />
    <Parameter Name="EdgeType_EMVCoA106" Offset="0x50F" Value="0x33" />

```

```
<Parameter Name="EdgeStyleConfiguration_EMVCoA106" Offset="0x510"
Value="0x64" />
<Parameter Name="EdgeLength_EMVCoA106" Offset="0x511" Value="0x10" />
<Parameter Name="ResidualAmplitudeLevel_EMVCoB106" Offset="0x512"
Value="0xCF" />
<Parameter Name="EdgeType_EMVCoB106" Offset="0x513" Value="0x44" />
<Parameter Name="EdgeStyleConfiguration_EMVCoB106" Offset="0x514"
Value="0x11" />
<Parameter Name="EdgeLength_EMVCoB106" Offset="0x515" Value="0x10" />
```


3 Save EEPROM settings

To apply new settings stored in a new XML to the PN7220, we can use the CockPit_Util_V1_0 tool. It works in 2 steps: Step one is required to push the XML data to the Android DH system, and the second step is then to execute the configuration tool “CockPit_Util_V1_0” on the Android DH system.

3.1 Push XML

Push the Pn72xx_DumpData.xml file to the Android system, into /vendor/etc/ folder

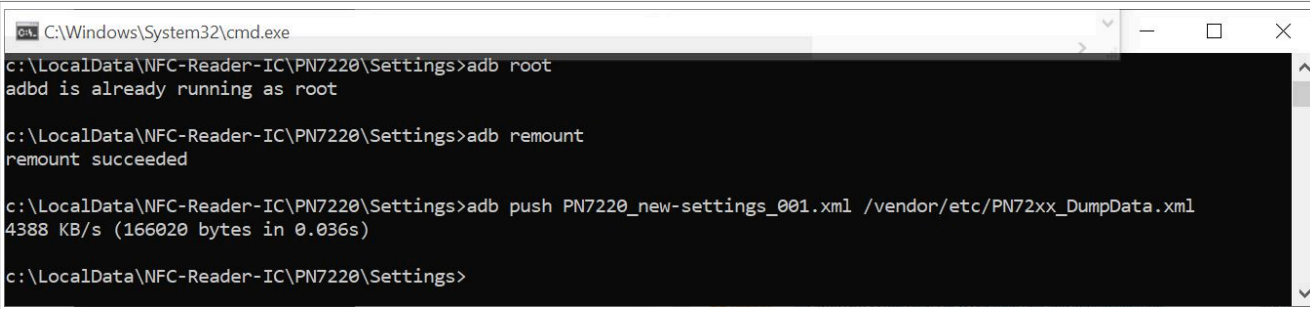
Example:

Start a CMD shell in the directory, where the XML settings are stored.

- adb root
- adb remount
- adb push Pn72xx_DumpData.xml /vendor/etc/

Note: Rename the file while pushing it, if the filename is different. Example: `adb push PN7220_new-settings_001.xml /vendor/etc/PN72xx_DumpData.xml`

Example is shown in [Figure 4](#).



```
C:\Windows\System32\cmd.exe
c:\LocalData\NFC-Reader-IC\PN7220\Settings>adb root
adb is already running as root

c:\LocalData\NFC-Reader-IC\PN7220\Settings>adb remount
remount succeeded

c:\LocalData\NFC-Reader-IC\PN7220\Settings>adb push PN7220_new-settings_001.xml /vendor/etc/PN72xx_DumpData.xml
4388 KB/s (166020 bytes in 0.036s)

c:\LocalData\NFC-Reader-IC\PN7220\Settings>
```

Figure 4. Push XML data

3.2 Run CockPit_Util_V1_0

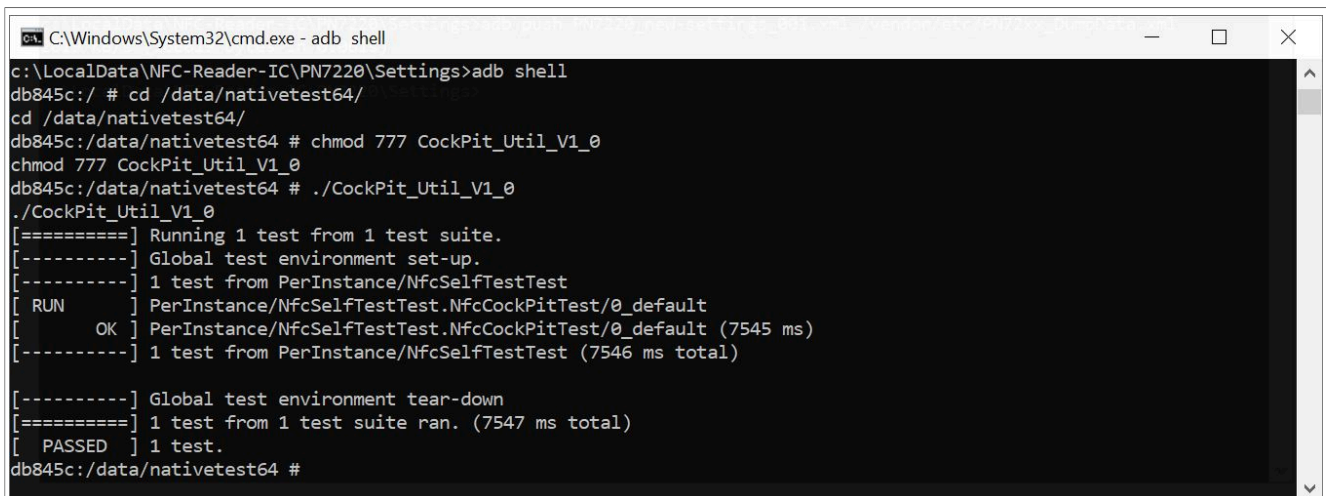
Then execute the configuration tool CockPit_Util_V1_0.

Example:

Start a CMD shell.

- adb shell
- cd /data/nativetest64/
- chmod 777 CockPit_Util_V1_0
- ./CockPit_Util_V1_0

Example is shown in [Figure 5](#).



```
C:\Windows\System32\cmd.exe - adb shell
c:\LocalData\NFC-Reader-IC\PN7220\Settings>adb shell
db845c:/ # cd /data/nativetest64/
cd /data/nativetest64/
db845c:/data/nativetest64 # chmod 777 CockPit_Util_V1_0
chmod 777 CockPit_Util_V1_0
db845c:/data/nativetest64 # ./CockPit_Util_V1_0
./CockPit_Util_V1_0
[====] Running 1 test from 1 test suite.
[-----] Global test environment set-up.
[-----] 1 test from PerInstance/NfcSelfTestTest
[ RUN   ] PerInstance/NfcSelfTestTest.NfcCockPitTest/0_default
[ OK   ] PerInstance/NfcSelfTestTest.NfcCockPitTest/0_default (7545 ms)
[-----] 1 test from PerInstance/NfcSelfTestTest (7546 ms total)

[-----] Global test environment tear-down
[====] 1 test from 1 test suite ran. (7547 ms total)
[ PASSED ] 1 test.
db845c:/data/nativetest64 #
```

Figure 5. Run CockPit_Util_V1_0

4 Abbreviations

Table 1. Abbreviations

Acronym	Description
DH	device host
FW	firmware

5 References

- [1] NFC Cockpit <https://www.nxp.com/products/rfid-nfc/nfc-hf/nfc-readers/nfc-cockpit-configuration-tool-for-nfics:NFC-COCKPIT>
- [2] PN5190 homepage <https://www.nxp.com/products/rfid-nfc/nfc-hf/nfc-readers/nfc-frontend-supporting-challenging-rf-environment-for-payment-physical-access-control:PN5190>
- [3] PN5190 Antenna design guide <https://www.nxp.com/docs/en/application-note/AN12549.pdf>
- [4] PN5190 Antenna design tools <https://www.nxp.com/downloads/en/application-software/OT6824.zip>
- [5] PN5190 video tutorials <https://www.nxp.com/design/training/pn5190-dynamic-power-control-quick-calibration-and-txshaping-demo:TIP-PN5190-DYNAMIC-POWER-CONTROL-DEMO>
- [6] PNEV5190BP <https://www.nxp.com/products/rfid-nfc/nfc-hf/nfc-readers/development-board-for-pn5190:PNEV5190BP>

6 Note about the source code in the document

Example code shown in this document has the following copyright and BSD-3-Clause license:

Copyright YYYY NXP Redistribution and use in source and binary forms, with or without modification, are permitted provided that the following conditions are met:

1. Redistributions of source code must retain the above copyright notice, this list of conditions and the following disclaimer.
2. Redistributions in binary form must reproduce the above copyright notice, this list of conditions and the following disclaimer in the documentation and/or other materials must be provided with the distribution.
3. Neither the name of the copyright holder nor the names of its contributors may be used to endorse or promote products derived from this software without specific prior written permission.

THIS SOFTWARE IS PROVIDED BY THE COPYRIGHT HOLDERS AND CONTRIBUTORS "AS IS" AND ANY EXPRESS OR IMPLIED WARRANTIES, INCLUDING, BUT NOT LIMITED TO, THE IMPLIED WARRANTIES OF MERCHANTABILITY AND FITNESS FOR A PARTICULAR PURPOSE ARE DISCLAIMED. IN NO EVENT SHALL THE COPYRIGHT HOLDER OR CONTRIBUTORS BE LIABLE FOR ANY DIRECT, INDIRECT, INCIDENTAL, SPECIAL, EXEMPLARY, OR CONSEQUENTIAL DAMAGES (INCLUDING, BUT NOT LIMITED TO, PROCUREMENT OF SUBSTITUTE GOODS OR SERVICES; LOSS OF USE, DATA, OR PROFITS; OR BUSINESS INTERRUPTION) HOWEVER CAUSED AND ON ANY THEORY OF LIABILITY, WHETHER IN CONTRACT, STRICT LIABILITY, OR TORT (INCLUDING NEGLIGENCE OR OTHERWISE) ARISING IN ANY WAY OUT OF THE USE OF THIS SOFTWARE, EVEN IF ADVISED OF THE POSSIBILITY OF SUCH DAMAGE.

7 Legal information

7.1 Definitions

Draft — A draft status on a document indicates that the content is still under internal review and subject to formal approval, which may result in modifications or additions. NXP Semiconductors does not give any representations or warranties as to the accuracy or completeness of information included in a draft version of a document and shall have no liability for the consequences of use of such information.

7.2 Disclaimers

Limited warranty and liability — Information in this document is believed to be accurate and reliable. However, NXP Semiconductors does not give any representations or warranties, expressed or implied, as to the accuracy or completeness of such information and shall have no liability for the consequences of use of such information. NXP Semiconductors takes no responsibility for the content in this document if provided by an information source outside of NXP Semiconductors.

In no event shall NXP Semiconductors be liable for any indirect, incidental, punitive, special or consequential damages (including - without limitation - lost profits, lost savings, business interruption, costs related to the removal or replacement of any products or rework charges) whether or not such damages are based on tort (including negligence), warranty, breach of contract or any other legal theory.

Notwithstanding any damages that customer might incur for any reason whatsoever, NXP Semiconductors' aggregate and cumulative liability towards customer for the products described herein shall be limited in accordance with the Terms and conditions of commercial sale of NXP Semiconductors.

Right to make changes — NXP Semiconductors reserves the right to make changes to information published in this document, including without limitation specifications and product descriptions, at any time and without notice. This document supersedes and replaces all information supplied prior to the publication hereof.

Suitability for use — NXP Semiconductors products are not designed, authorized or warranted to be suitable for use in life support, life-critical or safety-critical systems or equipment, nor in applications where failure or malfunction of an NXP Semiconductors product can reasonably be expected to result in personal injury, death or severe property or environmental damage. NXP Semiconductors and its suppliers accept no liability for inclusion and/or use of NXP Semiconductors products in such equipment or applications and therefore such inclusion and/or use is at the customer's own risk.

Applications — Applications that are described herein for any of these products are for illustrative purposes only. NXP Semiconductors makes no representation or warranty that such applications will be suitable for the specified use without further testing or modification.

Customers are responsible for the design and operation of their applications and products using NXP Semiconductors products, and NXP Semiconductors accepts no liability for any assistance with applications or customer product design. It is customer's sole responsibility to determine whether the NXP Semiconductors product is suitable and fit for the customer's applications and products planned, as well as for the planned application and use of customer's third party customer(s). Customers should provide appropriate design and operating safeguards to minimize the risks associated with their applications and products.

NXP Semiconductors does not accept any liability related to any default, damage, costs or problem which is based on any weakness or default in the customer's applications or products, or the application or use by customer's third party customer(s). Customer is responsible for doing all necessary testing for the customer's applications and products using NXP Semiconductors products in order to avoid a default of the applications and the products or of the application or use by customer's third party customer(s). NXP does not accept any liability in this respect.

Terms and conditions of commercial sale — NXP Semiconductors products are sold subject to the general terms and conditions of commercial sale, as published at <http://www.nxp.com/profile/terms>, unless otherwise agreed in a valid written individual agreement. In case an individual agreement is concluded only the terms and conditions of the respective agreement shall apply. NXP Semiconductors hereby expressly objects to applying the customer's general terms and conditions with regard to the purchase of NXP Semiconductors products by customer.

Export control — This document as well as the item(s) described herein may be subject to export control regulations. Export might require a prior authorization from competent authorities.

Suitability for use in non-automotive qualified products — Unless this document expressly states that this specific NXP Semiconductors product is automotive qualified, the product is not suitable for automotive use. It is neither qualified nor tested in accordance with automotive testing or application requirements. NXP Semiconductors accepts no liability for inclusion and/or use of non-automotive qualified products in automotive equipment or applications.

In the event that customer uses the product for design-in and use in automotive applications to automotive specifications and standards, customer (a) shall use the product without NXP Semiconductors' warranty of the product for such automotive applications, use and specifications, and (b) whenever customer uses the product for automotive applications beyond NXP Semiconductors' specifications such use shall be solely at customer's own risk, and (c) customer fully indemnifies NXP Semiconductors for any liability, damages or failed product claims resulting from customer design and use of the product for automotive applications beyond NXP Semiconductors' standard warranty and NXP Semiconductors' product specifications.

Evaluation products — This product is provided on an "as is" and "with all faults" basis for evaluation purposes only. NXP Semiconductors, its affiliates and their suppliers expressly disclaim all warranties, whether express, implied or statutory, including but not limited to the implied warranties of non-infringement, merchantability and fitness for a particular purpose. The entire risk as to the quality, or arising out of the use or performance, of this product remains with customer.

In no event shall NXP Semiconductors, its affiliates or their suppliers be liable to customer for any special, indirect, consequential, punitive or incidental damages (including without limitation damages for loss of business, business interruption, loss of use, loss of data or information, and the like) arising out of the use of or inability to use the product, whether or not based on tort (including negligence), strict liability, breach of contract, breach of warranty or any other theory, even if advised of the possibility of such damages.

Notwithstanding any damages that customer might incur for any reason whatsoever (including without limitation, all damages referenced above and all direct or general damages), the entire liability of NXP Semiconductors, its affiliates and their suppliers and customer's exclusive remedy for all of the foregoing shall be limited to actual damages incurred by customer based on reasonable reliance up to the greater of the amount actually paid by customer for the product or five dollars (US\$5.00). The foregoing limitations, exclusions and disclaimers shall apply to the maximum extent permitted by applicable law, even if any remedy fails of its essential purpose.

Translations — A non-English (translated) version of a document, including the legal information in that document, is for reference only. The English version shall prevail in case of any discrepancy between the translated and English versions.

Security — Customer understands that all NXP products may be subject to unidentified vulnerabilities or may support established security standards or specifications with known limitations. Customer is responsible for the design and operation of its applications and products throughout their lifecycles to reduce the effect of these vulnerabilities on customer's applications and products. Customer's responsibility also extends to other open and/or proprietary technologies supported by NXP products for use in customer's applications. NXP accepts no liability for any vulnerability. Customer should regularly check security updates from NXP and follow up appropriately. Customer shall select products with security features that best meet rules, regulations, and standards of the intended application and make the ultimate design decisions regarding its products and is solely responsible for compliance with all legal, regulatory, and security related requirements concerning its products, regardless of any information or support that may be provided by NXP.

NXP has a Product Security Incident Response Team (PSIRT) (reachable at PSIRT@nxp.com) that manages the investigation, reporting, and solution release to security vulnerabilities of NXP products.

7.3 Licenses

Purchase of NXP ICs with NFC technology — Purchase of an NXP Semiconductors IC that complies with one of the Near Field Communication (NFC) standards ISO/IEC 18092 and ISO/IEC 21481 does not convey an implied license under any patent right infringed by implementation of any of those standards. Purchase of NXP Semiconductors IC does not include a license to any NXP patent (or other IP right) covering combinations of those products with other products, whether hardware or software.

7.4 Trademarks

Notice: All referenced brands, product names, service names, and trademarks are the property of their respective owners.

NXP — wordmark and logo are trademarks of NXP B.V.

EdgeVerse — is a trademark of NXP B.V.

Tables

Tab. 1. Abbreviations 11

Figures

Fig. 1. Installation of CockPit_Util_V1_0 4

Fig. 2. Use of PN5190BP5

Fig. 3. Structure of PN7220 settings 6

Fig. 4. Push XML data 9

Fig. 5. Run CockPit_Util_V1_0 10

Contents

1	Introduction	3
2	Preparation	4
2.1	Install CockPit_Util_V1_0	4
2.2	Prepare XML settings	4
2.2.1	Use of PN5190	5
2.2.2	Relevant XML content	5
3	Save EEPROM settings	9
3.1	Push XML	9
3.2	Run CockPit_Util_V1_0	9
4	Abbreviations	11
5	References	12
6	Note about the source code in the document	13
7	Legal information	14

Please be aware that important notices concerning this document and the product(s) described herein, have been included in section 'Legal information'.

© 2023 NXP B.V.

All rights reserved.

For more information, please visit: <http://www.nxp.com>

Date of release: 7 July 2023
Document identifier: AN13938